

**Anti-Connexin 31.3 Antibody**  
Catalog # AP53964**Specification**

---

**Anti-Connexin 31.3 Antibody - Product Information**

Application	WB
Primary Accession	<a href="#">Q8NFK1</a>
Reactivity	Human, Mouse, Rat
Host	Rabbit
Clonality	Polyclonal
Calculated MW	31299

**Anti-Connexin 31.3 Antibody - Additional Information****Gene ID** 349149**Other Names**

GJE1; Gap junction gamma-3 protein; Connexin-30.2; Cx30.2; Connexin-31.3; Cx31.3; Gap junction epsilon-1 protein

**Target/Specificity**

Recognizes endogenous levels of Connexin 31.3 protein.

**Dilution**

WB~~1/500 - 1/1000

**Format**

Liquid in 0.42% Potassium phosphate, 0.87% Sodium chloride, pH 7.3, 30% glycerol, and 0.09% (W/V) sodium azide.

**Storage**

Store at -20 °C. Stable for 12 months from date of receipt

**Anti-Connexin 31.3 Antibody - Protein Information****Name** GJC3**Synonyms** GJE1**Function**

One gap junction consists of a cluster of closely packed pairs of transmembrane channels, the connexons, through which materials of low MW diffuse from one cell to a neighboring cell.

**Cellular Location**

Cell membrane; Multi-pass membrane protein. Cell junction, gap junction

**Tissue Location**

CNS specific. Expression is restricted to brain, spinal cord, and sciatic nerve. According to

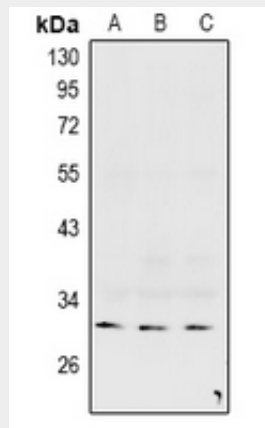
PubMed:12881038, expression is abundant in skeletal muscle, liver, and heart, and to a minor degree in pancreas and kidney.

### Anti-Connexin 31.3 Antibody - Protocols

Provided below are standard protocols that you may find useful for product applications.

- [Western Blot](#)
- [Blocking Peptides](#)
- [Dot Blot](#)
- [Immunohistochemistry](#)
- [Immunofluorescence](#)
- [Immunoprecipitation](#)
- [Flow Cytometry](#)
- [Cell Culture](#)

### Anti-Connexin 31.3 Antibody - Images



Western blot analysis of Connexin 31.3 expression in mouse brain (A), rat brain (B), HepG2 (C) whole cell lysates.

### Anti-Connexin 31.3 Antibody - Background

Rabbit polyclonal antibody to Connexin 31.3