

**Anti-DUS2L Antibody**  
Catalog # AP53951**Specification****Anti-DUS2L Antibody - Product Information**

Application	WB
Primary Accession	<a href="#">Q9NX74</a>
Reactivity	Human, Mouse, Rat
Host	Rabbit
Clonality	Polyclonal
Calculated MW	55050

**Anti-DUS2L Antibody - Additional Information****Gene ID** 54920**Other Names**

DUS2L; tRNA-dihydrouridine(20) synthase [NAD(P)+]-like; Dihydrouridine synthase 2; Up-regulated in lung cancer protein 8; URLC8; tRNA-dihydrouridine synthase 2-like; hDUS2

**Target/Specificity**

Recognizes endogenous levels of DUS2L protein.

**Dilution**

WB~~1/500 - 1/1000

**Format**

Liquid in 0.42% Potassium phosphate, 0.87% Sodium chloride, pH 7.3, 30% glycerol, and 0.09% (W/V) sodium azide.

**Storage**

Store at -20 °C. Stable for 12 months from date of receipt

**Anti-DUS2L Antibody - Protein Information****Name** DUS2**Synonyms** DUS2L**Function**Catalyzes the NADPH-dependent synthesis of dihydrouridine, a modified base found in the D-loop of most tRNAs (PubMed: [15994936](http://www.uniprot.org/citations/15994936), PubMed: [26429968](http://www.uniprot.org/citations/26429968), PubMed: [30149704](http://www.uniprot.org/citations/30149704), PubMed: [34798057](http://www.uniprot.org/citations/34798057), PubMed: [38680565](http://www.uniprot.org/citations/38680565)). Specifically modifies U20 in cytoplasmic tRNAs (PubMed: [38680565](http://www.uniprot.org/citations/38680565)). Activity

depends on the presence of guanosine at position 19 in the tRNA substrate (PubMed:<a href="http://www.uniprot.org/citations/38680565" target="\_blank">38680565</a>). Negatively regulates the activation of EIF2AK2/PKR (PubMed:<a href="http://www.uniprot.org/citations/18096616" target="\_blank">18096616</a>).

#### Cellular Location

Cytoplasm. Endoplasmic reticulum. Note=Mainly at the endoplasmic reticulum.

#### Tissue Location

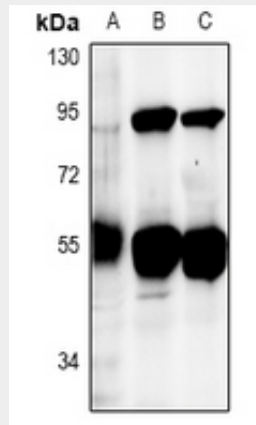
Weak expression in heart, placenta and skeletal muscle. Up-regulated in most lung cancer cells (at protein level)

### Anti-DUS2L Antibody - Protocols

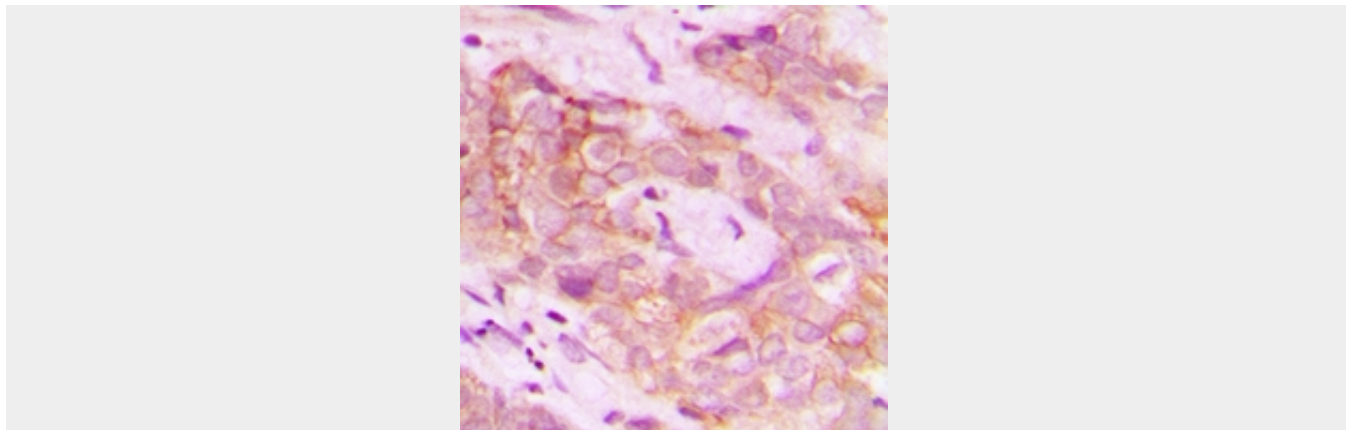
Provided below are standard protocols that you may find useful for product applications.

- [Western Blot](#)
- [Blocking Peptides](#)
- [Dot Blot](#)
- [Immunohistochemistry](#)
- [Immunofluorescence](#)
- [Immunoprecipitation](#)
- [Flow Cytometry](#)
- [Cell Culture](#)

### Anti-DUS2L Antibody - Images



Western blot analysis of DUS2L expression in HCT116 (A), mouse lung (B), rat lung (C) whole cell lysates.



Immunohistochemical analysis of DUS2L staining in human breast cancer formalin fixed paraffin embedded tissue section. The section was pre-treated using heat mediated antigen retrieval with sodium citrate buffer (pH 6.0). The section was then incubated with the antibody at room temperature and detected using an HRP conjugated compact polymer system. DAB was used as the chromogen. The section was then counterstained with haematoxylin and mounted with DPX.

#### **Anti-DUS2L Antibody - Background**

Rabbit polyclonal antibody to DUS2L