

**Anti-Cytochrome b5B Antibody**  
Catalog # AP53946**Specification**

---

**Anti-Cytochrome b5B Antibody - Product Information**

Application	WB
Primary Accession	<a href="#">O43169</a>
Reactivity	Human, Mouse, Rat
Host	Rabbit
Clonality	Polyclonal
Calculated MW	16695

**Anti-Cytochrome b5B Antibody - Additional Information****Gene ID** 80777**Other Names**

CYB5M; OMB5; Cytochrome b5 type B; Cytochrome b5 outer mitochondrial membrane isoform

**Target/Specificity**

Recognizes endogenous levels of Cytochrome b5B protein.

**Dilution**

WB~~1/500 - 1/1000

**Format**

Liquid in 0.42% Potassium phosphate, 0.87% Sodium chloride, pH 7.3, 30% glycerol, and 0.09% (W/V) sodium azide.

**Storage**

Store at -20 °C. Stable for 12 months from date of receipt

**Anti-Cytochrome b5B Antibody - Protein Information****Name** CYB5B**Synonyms** CYB5M, OMB5**Function**

Cytochrome b5 is a membrane-bound hemoprotein functioning as an electron carrier for several membrane-bound oxygenases.

**Cellular Location**

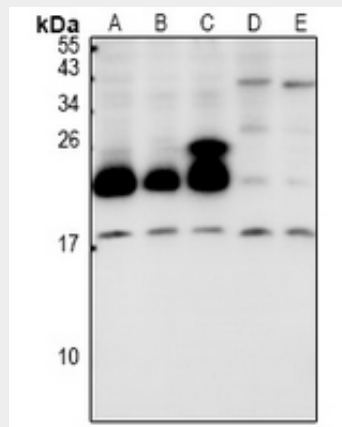
Mitochondrion outer membrane {ECO:0000250|UniProtKB:P04166}

**Anti-Cytochrome b5B Antibody - Protocols**

Provided below are standard protocols that you may find useful for product applications.

- [Western Blot](#)
- [Blocking Peptides](#)
- [Dot Blot](#)
- [Immunohistochemistry](#)
- [Immunofluorescence](#)
- [Immunoprecipitation](#)
- [Flow Cytometry](#)
- [Cell Culture](#)

#### Anti-Cytochrome b5B Antibody - Images



Western blot analysis of Cytochrome b5B expression in HCT116 (A), LO2 (B), HepG2 (C), AML12 (D), PC12 (E) whole cell lysates.

#### Anti-Cytochrome b5B Antibody - Background

Rabbit polyclonal antibody to Cytochrome b5B