

Anti-TF2A2 Antibody
Catalog # AP53945**Specification**

Anti-TF2A2 Antibody - Product Information

Application	WB
Primary Accession	P52657
Reactivity	Human, Mouse, Rat
Host	Rabbit
Clonality	Polyclonal
Calculated MW	12457

Anti-TF2A2 Antibody - Additional Information**Gene ID** 2958**Other Names**

TF2A2; Transcription initiation factor IIA subunit 2; General transcription factor IIA subunit 2; TFIIA p12 subunit; TFIIA-12; TFIIAS; Transcription initiation factor IIA gamma chain; TFIIA-gamma

Target/Specificity

Recognizes endogenous levels of TF2A2 protein.

Dilution

WB~~1/500 - 1/1000

Format

Liquid in 0.42% Potassium phosphate, 0.87% Sodium chloride, pH 7.3, 30% glycerol, and 0.09% (W/V) sodium azide.

Storage

Store at -20 °C. Stable for 12 months from date of receipt

Anti-TF2A2 Antibody - Protein Information**Name** GTF2A2**Synonyms** TF2A2**Function**

TFIIA is a component of the transcription machinery of RNA polymerase II and plays an important role in transcriptional activation. TFIIA in a complex with TBP mediates transcriptional activity.

Cellular Location

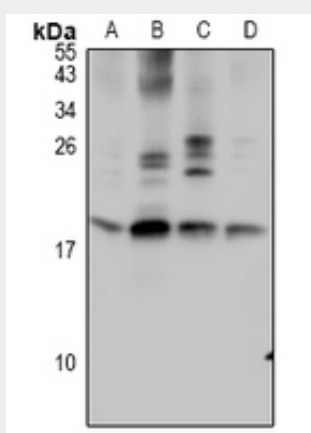
Nucleus.

Anti-TF2A2 Antibody - Protocols

Provided below are standard protocols that you may find useful for product applications.

- [Western Blot](#)
- [Blocking Peptides](#)
- [Dot Blot](#)
- [Immunohistochemistry](#)
- [Immunofluorescence](#)
- [Immunoprecipitation](#)
- [Flow Cytometry](#)
- [Cell Culture](#)

Anti-TF2A2 Antibody - Images



Western blot analysis of TF2A2 expression in H9C2 (A), AML12 (B), HEK293T (C), A549 (D) whole cell lysates.

Anti-TF2A2 Antibody - Background

Rabbit polyclonal antibody to TF2A2