

Anti-Myosin-pan (AcK505) Antibody
Catalog # AP53939**Specification****Anti-Myosin-pan (AcK505) Antibody - Product Information**

Application	WB
Primary Accession	P12882
Other Accession	Q9UKX2 , P11055 , Q9Y623 , P13533 , P12883 , P13535
Reactivity	Human, Mouse, Rat
Host	Rabbit
Clonality	Polyclonal
Calculated MW	223145

Anti-Myosin-pan (AcK505) Antibody - Additional Information

Gene ID 4619

Other Names

MYH1; Myosin-1; Myosin heavy chain 1; Myosin heavy chain 2x; MyHC-2x; Myosin heavy chain IIX/d; MyHC-IIX/d; Myosin heavy chain, skeletal muscle, adult 1; MYH2; MYHSA2; Myosin-2; Myosin heavy chain 2; Myosin heavy chain 2a; MyHC-2a; Myosin heavy chain IIa; MyHC-IIa; Myosin heavy chain, skeletal muscle, adult 2; MYH3; Myosin-3; Muscle embryonic myosin heavy chain; Myosin heavy chain 3; Myosin heavy chain, fast skeletal muscle, embryonic; SMHCE; MYH4; Myosin-4; Myosin heavy chain 2b; MyHC-2b; Myosin heavy chain 4; Myosin heavy chain IIb; MyHC-IIb; Myosin heavy chain, skeletal muscle, fetal; MYH6; MYHCA; Myosin-6; Myosin heavy chain 6; Myosin heavy chain, cardiac muscle alpha isoform; MyHC-alpha; MYH7; MYHCB; Myosin-7; Myosin heavy chain 7; Myosin heavy chain slow isoform; MyHC-slow; Myosin heavy chain, cardiac muscle beta isoform; MyHC-beta; MYH8; Myosin-8; Myosin heavy chain 8; Myosin heavy chain, skeletal muscle, perinatal; MyHC-perinatal

Target/Specificity

Recognizes endogenous levels of Myosin-pan (AcK505) protein.

Dilution

WB~~1/500 - 1/2000

Format

Liquid in 0.42% Potassium phosphate, 0.87% Sodium chloride, pH 7.3, 30% glycerol, and 0.09% (W/V) sodium azide.

Storage

Store at -20 °C. Stable for 12 months from date of receipt

Anti-Myosin-pan (AcK505) Antibody - Protein Information

Name MYH1

Function

Muscle contraction.

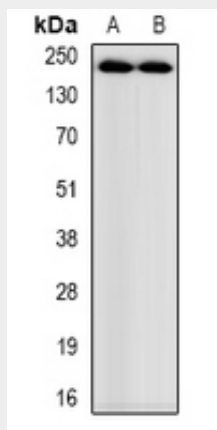
Cellular Location

Cytoplasm, myofibril. Note=Thick filaments of the myofibrils

Anti-Myosin-pan (AcK505) Antibody - Protocols

Provided below are standard protocols that you may find useful for product applications.

- [Western Blot](#)
- [Blocking Peptides](#)
- [Dot Blot](#)
- [Immunohistochemistry](#)
- [Immunofluorescence](#)
- [Immunoprecipitation](#)
- [Flow Cytometry](#)
- [Cell Culture](#)

Anti-Myosin-pan (AcK505) Antibody - Images

Western blot analysis of Myosin-pan (AcK505) expression in mouse heart (A), rat heart (B) whole cell lysates.

Anti-Myosin-pan (AcK505) Antibody - Background

Rabbit polyclonal antibody to Myosin-pan (AcK505)