

Anti-HSP20 (pS16) Antibody
Catalog # AP53928**Specification**

Anti-HSP20 (pS16) Antibody - Product Information

Application	WB, IF
Primary Accession	O14558
Reactivity	Human, Mouse, Rat
Host	Rabbit
Clonality	Polyclonal
Calculated MW	17136

Anti-HSP20 (pS16) Antibody - Additional Information**Gene ID** 126393**Other Names**

Heat shock protein beta-6; HspB6; Heat shock 20 kDa-like protein p20

Target/Specificity

Recognizes endogenous levels of HSP20 (pS16) protein.

Dilution

WB~~1/500 - 1/2000

IF~~1/50 - 1/100

Format

Liquid in 0.42% Potassium phosphate, 0.87% Sodium chloride, pH 7.3, 30% glycerol, and 0.09% (W/V) sodium azide.

Storage

Store at -20 °C. Stable for 12 months from date of receipt

Anti-HSP20 (pS16) Antibody - Protein Information**Name** HSPB6**Function**

Small heat shock protein which functions as a molecular chaperone probably maintaining denatured proteins in a folding- competent state. Seems to have versatile functions in various biological processes. Plays a role in regulating muscle function such as smooth muscle vasorelaxation and cardiac myocyte contractility. May regulate myocardial angiogenesis implicating KDR. Overexpression mediates cardioprotection and angiogenesis after induced damage. Stabilizes monomeric YWHAZ thereby supporting YWHAZ chaperone-like activity.

Cellular Location

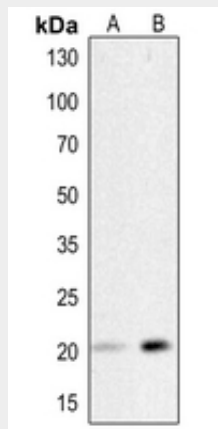
Cytoplasm. Nucleus. Secreted Note=Translocates to nuclear foci during heat shock

Anti-HSP20 (pS16) Antibody - Protocols

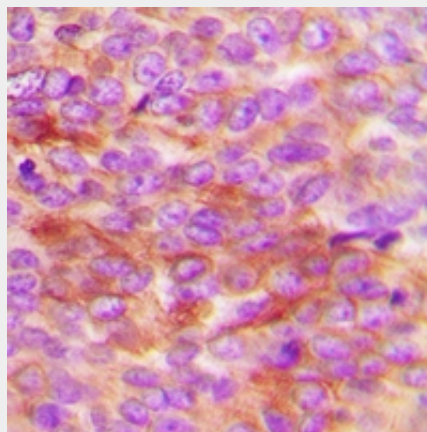
Provided below are standard protocols that you may find useful for product applications.

- [Western Blot](#)
- [Blocking Peptides](#)
- [Dot Blot](#)
- [Immunohistochemistry](#)
- [Immunofluorescence](#)
- [Immunoprecipitation](#)
- [Flow Cytometry](#)
- [Cell Culture](#)

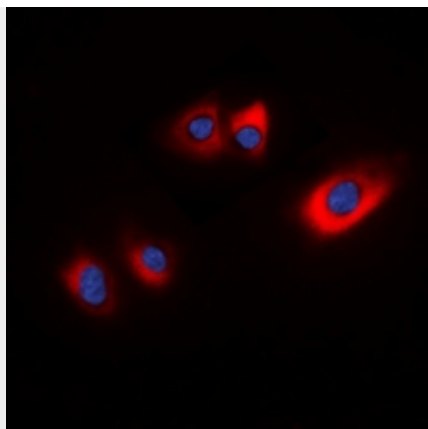
Anti-HSP20 (pS16) Antibody - Images



Western blot analysis of HSP20 (pS16) expression in H460 (A), rat heart (B) whole cell lysates.



Immunohistochemical analysis of HSP20 (pS16) staining in human breast cancer formalin fixed paraffin embedded tissue section. The section was pre-treated using heat mediated antigen retrieval with sodium citrate buffer (pH 6.0). The section was then incubated with the antibody at room temperature and detected using an HRP conjugated compact polymer system. DAB was used as the chromogen. The section was then counterstained with haematoxylin and mounted with DPX.



Immunofluorescent analysis of HSP20 (pS16) staining in HEK293T cells. Formalin-fixed cells were permeabilized with 0.1% Triton X-100 in TBS for 5-10 minutes and blocked with 3% BSA-PBS for 30 minutes at room temperature. Cells were probed with the primary antibody in 3% BSA-PBS and incubated overnight at 4 °C in a humidified chamber. Cells were washed with PBST and incubated with a DyLight 594-conjugated secondary antibody (red) in PBS at room temperature in the dark. DAPI was used to stain the cell nuclei (blue).

Anti-HSP20 (pS16) Antibody - Background

Rabbit polyclonal antibody to HSP20 (pS16)