

Anti-PKE Antibody
Catalog # AP53921

Specification

Anti-PKE Antibody - Product Information

Application	WB
Primary Accession	Q86UX6
Reactivity	Human, Mouse, Rat
Host	Rabbit
Clonality	Polyclonal
Calculated MW	54994

Anti-PKE Antibody - Additional Information

Gene ID 282974

Other Names

YANK3; Serine/threonine-protein kinase 32C; PKE; Yet another novel kinase 3

Target/Specificity

Recognizes endogenous levels of PKE protein.

Dilution

WB~~1/500 - 1/1000

Format

Liquid in 0.42% Potassium phosphate, 0.87% Sodium chloride, pH 7.3, 30% glycerol, and 0.09% (W/V) sodium azide.

Storage

Store at -20 °C. Stable for 12 months from date of receipt

Anti-PKE Antibody - Protein Information

Name STK32C {ECO:0000312|EMBL:AAH45760.1}

Synonyms YANK3

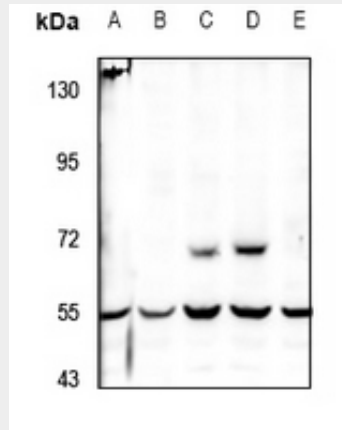
Anti-PKE Antibody - Protocols

Provided below are standard protocols that you may find useful for product applications.

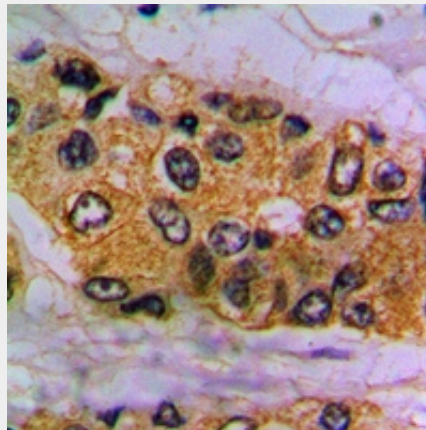
- [Western Blot](#)
- [Blocking Peptides](#)
- [Dot Blot](#)
- [Immunohistochemistry](#)

- [Immunofluorescence](#)
- [Immunoprecipitation](#)
- [Flow Cytometry](#)
- [Cell Culture](#)

Anti-PKE Antibody - Images



Western blot analysis of PKE expression in CT26 (A), PC12 (B), HEK293T (C), A549 (D), MCF7 (E) whole cell lysates.



Immunohistochemical analysis of PKE staining in human prostate cancer formalin fixed paraffin embedded tissue section. The section was pre-treated using heat mediated antigen retrieval with sodium citrate buffer (pH 6.0). The section was then incubated with the antibody at room temperature and detected using an HRP conjugated compact polymer system. DAB was used as the chromogen. The section was then counterstained with haematoxylin and mounted with DPX.

Anti-PKE Antibody - Background

Rabbit polyclonal antibody to PKE