

**Anti-ASF1B Antibody**  
Catalog # AP53915

**Specification**

---

**Anti-ASF1B Antibody - Product Information**

Application	<b>WB</b>
Primary Accession	<a href="#">Q9NVP2</a>
Reactivity	<b>Human</b>
Host	<b>Rabbit</b>
Clonality	<b>Polyclonal</b>
Calculated MW	<b>22434</b>

**Anti-ASF1B Antibody - Additional Information**

**Gene ID** 55723

**Other Names**

Histone chaperone ASF1B; Anti-silencing function protein 1 homolog B; hAsf1; hAsf1b; CCG1-interacting factor A-II; CIA-II; hCIA-II

**Target/Specificity**

Recognizes endogenous levels of ASF1B protein.

**Dilution**

WB~~1/500 - 1/1000

**Format**

Liquid in 0.42% Potassium phosphate, 0.87% Sodium chloride, pH 7.3, 30% glycerol, and 0.09% (W/V) sodium azide.

**Storage**

Store at -20 °C. Stable for 12 months from date of receipt

**Anti-ASF1B Antibody - Protein Information**

**Name** ASF1B {ECO:0000303|PubMed:11470414, ECO:0000312|HGNC:HGNC:20996}

**Function**

Histone chaperone that facilitates histone deposition and histone exchange and removal during nucleosome assembly and disassembly (PubMed:<a href="http://www.uniprot.org/citations/11897662" target="\_blank">11897662</a>, PubMed:<a href="http://www.uniprot.org/citations/14718166" target="\_blank">14718166</a>, PubMed:<a href="http://www.uniprot.org/citations/15664198" target="\_blank">15664198</a>, PubMed:<a href="http://www.uniprot.org/citations/16151251" target="\_blank">16151251</a>, PubMed:<a href="http://www.uniprot.org/citations/21454524" target="\_blank">21454524</a>, PubMed:<a href="http://www.uniprot.org/citations/26527279" target="\_blank">26527279</a>). Cooperates with chromatin assembly factor 1 (CAF-1) to promote replication-dependent chromatin assembly (PubMed:<a href="http://www.uniprot.org/citations/11897662" target="\_blank">11897662</a>,

PubMed: <a href="http://www.uniprot.org/citations/14718166" target="\_blank">14718166</a>, PubMed: <a href="http://www.uniprot.org/citations/15664198" target="\_blank">15664198</a>, PubMed: <a href="http://www.uniprot.org/citations/16151251" target="\_blank">16151251</a>). Also involved in the nuclear import of the histone H3-H4 dimer together with importin-4 (IPO4): specifically recognizes and binds newly synthesized histones with the monomethylation of H3 'Lys-9' (H3K9me1) and diacetylation at 'Lys-5' and 'Lys-12' of H4 (H4K5K12ac) marks in the cytosol (PubMed: <a href="http://www.uniprot.org/citations/20953179" target="\_blank">20953179</a>, PubMed: <a href="http://www.uniprot.org/citations/21454524" target="\_blank">21454524</a>, PubMed: <a href="http://www.uniprot.org/citations/26527279" target="\_blank">26527279</a>). Does not participate in replication-independent nucleosome deposition which is mediated by ASF1A and HIRA (PubMed: <a href="http://www.uniprot.org/citations/11897662" target="\_blank">11897662</a>, PubMed: <a href="http://www.uniprot.org/citations/14718166" target="\_blank">14718166</a>, PubMed: <a href="http://www.uniprot.org/citations/15664198" target="\_blank">15664198</a>, PubMed: <a href="http://www.uniprot.org/citations/16151251" target="\_blank">16151251</a>). Required for gonad development (PubMed: <a href="http://www.uniprot.org/citations/12842904" target="\_blank">12842904</a>).

### Cellular Location

Nucleus. Cytoplasm, cytosol

### Tissue Location

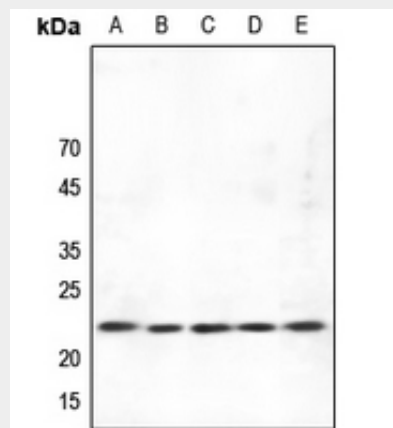
Highly expressed in testis and at lower levels in colon, small intestine and thymus.

### Anti-ASF1B Antibody - Protocols

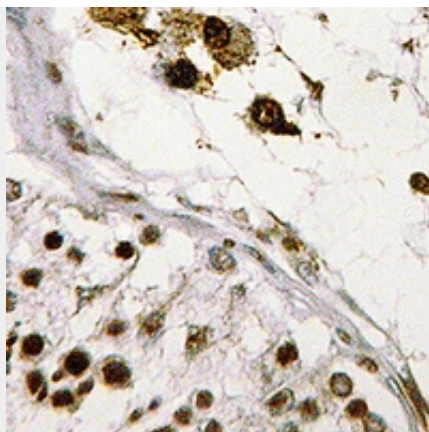
Provided below are standard protocols that you may find useful for product applications.

- [Western Blot](#)
- [Blocking Peptides](#)
- [Dot Blot](#)
- [Immunohistochemistry](#)
- [Immunofluorescence](#)
- [Immunoprecipitation](#)

### Anti-ASF1B Antibody - Images



Western blot analysis of ASF1B expression in HEK293T (A), U87MG (B), HeLa (C), K562 (D), MCF7 (E) whole cell lysates.



Immunohistochemical analysis of ASF1B staining in human testis formalin fixed paraffin embedded tissue section. The section was pre-treated using heat mediated antigen retrieval with sodium citrate buffer (pH 6.0). The section was then incubated with the antibody at room temperature and detected using an HRP conjugated compact polymer system. DAB was used as the chromogen. The section was then counterstained with haematoxylin and mounted with DPX.

#### **Anti-ASF1B Antibody - Background**

Rabbit polyclonal antibody to ASF1B