

Anti-Sugen Kinase 269 Antibody
Catalog # AP53906**Specification****Anti-Sugen Kinase 269 Antibody - Product Information**

Application	WB
Primary Accession	Q9H792
Reactivity	Human, Mouse
Host	Rabbit
Clonality	Polyclonal
Calculated MW	193106

Anti-Sugen Kinase 269 Antibody - Additional Information**Gene ID** 79834**Other Names**

KIAA2002; Pseudopodium-enriched atypical kinase 1; Sugén kinase 269; Tyrosine-protein kinase SgK269

Target/Specificity

Recognizes endogenous levels of Sugén Kinase 269 protein.

Dilution

WB~~1/500 - 1/1000

Format

Liquid in 0.42% Potassium phosphate, 0.87% Sodium chloride, pH 7.3, 30% glycerol, and 0.09% (W/V) sodium azide.

Storage

Store at -20 °C. Stable for 12 months from date of receipt

Anti-Sugen Kinase 269 Antibody - Protein Information**Name** PEAK1**Synonyms** KIAA2002**Function**

Probable catalytically inactive kinase. Scaffolding protein that regulates the cytoskeleton to control cell spreading and migration by modulating focal adhesion dynamics (PubMed: [20534451](http://www.uniprot.org/citations/20534451)), PubMed: [23105102](http://www.uniprot.org/citations/23105102)), PubMed: [35687021](http://www.uniprot.org/citations/35687021)). Acts as a scaffold for mediating EGFR signaling (PubMed: [23846654](http://www.uniprot.org/citations/23846654)).

Cellular Location

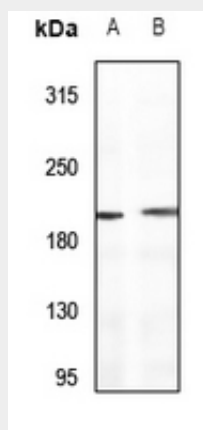
Cytoplasm, cytoskeleton. Cell junction, focal adhesion Note=Colocalizes with F-actin in serum-rich medium (PubMed:20534451) Actin colocalization is reduced during serum starvation (PubMed:20534451).

Anti-Sugen Kinase 269 Antibody - Protocols

Provided below are standard protocols that you may find useful for product applications.

- [Western Blot](#)
- [Blocking Peptides](#)
- [Dot Blot](#)
- [Immunohistochemistry](#)
- [Immunofluorescence](#)
- [Immunoprecipitation](#)
- [Flow Cytometry](#)
- [Cell Culture](#)

Anti-Sugen Kinase 269 Antibody - Images



Western blot analysis of Sugden Kinase 269 expression in HEK293T (A), LO2 (B) whole cell lysates.

Anti-Sugen Kinase 269 Antibody - Background

Rabbit polyclonal antibody to Sugden Kinase 269