

Anti-VAMP1/2/3 Antibody
Catalog # AP53901

Specification

Anti-VAMP1/2/3 Antibody - Product Information

Application	WB
Primary Accession	P23763
Other Accession	P63027 , Q15836
Reactivity	Human, Mouse, Rat
Host	Rabbit
Clonality	Polyclonal
Calculated MW	12902

Anti-VAMP1/2/3 Antibody - Additional Information

Gene ID 6843

Other Names

VAMP1; SYB1; Vesicle-associated membrane protein 1; VAMP-1; Synaptobrevin-1; VAMP2; SYB2; Vesicle-associated membrane protein 2; VAMP-2; Synaptobrevin-2; VAMP3; SYB3; Vesicle-associated membrane protein 3; VAMP-3; Cellubrevin; CEB; Synaptobrevin-3

Target/Specificity

Recognizes endogenous levels of VAMP1/2/3 protein.

Dilution

WB~~1/500 - 1/1000

Format

Liquid in 0.42% Potassium phosphate, 0.87% Sodium chloride, pH 7.3, 30% glycerol, and 0.09% (W/V) sodium azide.

Storage

Store at -20 °C. Stable for 12 months from date of receipt

Anti-VAMP1/2/3 Antibody - Protein Information

Name VAMP1

Synonyms SYB1

Function

Involved in the targeting and/or fusion of transport vesicles to their target membrane.

Cellular Location

[Isoform 1]: Cytoplasmic vesicle, secretory vesicle, synaptic vesicle membrane; Single-pass type IV membrane protein. Synapse, synaptosome [Isoform 3]: Mitochondrion outer membrane; Single-pass type IV membrane protein

Tissue Location

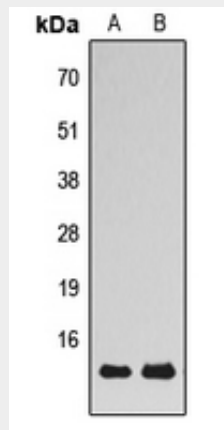
Nervous system, skeletal muscle and adipose tissue.

Anti-VAMP1/2/3 Antibody - Protocols

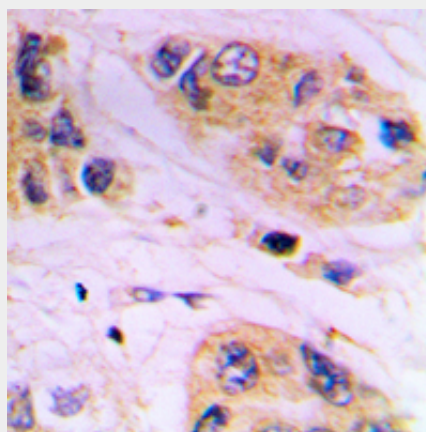
Provided below are standard protocols that you may find useful for product applications.

- [Western Blot](#)
- [Blocking Peptides](#)
- [Dot Blot](#)
- [Immunohistochemistry](#)
- [Immunofluorescence](#)
- [Immunoprecipitation](#)
- [Flow Cytometry](#)
- [Cell Culture](#)

Anti-VAMP1/2/3 Antibody - Images



Western blot analysis of VAMP1/2/3 expression in HepG2 (A), mouse brain (B) whole cell lysates.



Immunohistochemical analysis of VAMP1/2/3 staining in human prostate cancer formalin fixed paraffin embedded tissue section. The section was pre-treated using heat mediated antigen retrieval with sodium citrate buffer (pH 6.0). The section was then incubated with the antibody at room temperature and detected using an HRP conjugated compact polymer system. DAB was used as the chromogen. The section was then counterstained with haematoxylin and mounted with DPX.

Anti-VAMP1/2/3 Antibody - Background

Rabbit polyclonal antibody to VAMP1/2/3