

Anti-WWOX Antibody
Catalog # AP53889

Specification

Anti-WWOX Antibody - Product Information

Application	WB, IF
Primary Accession	O9NZC7
Reactivity	Human, Mouse, Rat
Host	Rabbit
Clonality	Polyclonal
Calculated MW	46677

Anti-WWOX Antibody - Additional Information

Gene ID 51741

Other Names

FOR; WOX1; WW domain-containing oxidoreductase; Fragile site FRA16D oxidoreductase

Target/Specificity

Recognizes endogenous levels of WWOX protein.

Dilution

WB~~1/500 - 1/1000

IF~~1/50 - 1/200

Format

Liquid in 0.42% Potassium phosphate, 0.87% Sodium chloride, pH 7.3, 30% glycerol, and 0.09% (W/V) sodium azide.

Storage

Store at -20 °C. Stable for 12 months from date of receipt

Anti-WWOX Antibody - Protein Information

Name WWOX

Synonyms FOR, SDR41C1, WOX1

Function

Putative oxidoreductase. Acts as a tumor suppressor and plays a role in apoptosis. Required for normal bone development (By similarity). May function synergistically with p53/TP53 to control genotoxic stress-induced cell death. Plays a role in TGFB1 signaling and TGFB1-mediated cell death. May also play a role in tumor necrosis factor (TNF)-mediated cell death. Inhibits Wnt signaling, probably by sequestering DVL2 in the cytoplasm.

Cellular Location

Cytoplasm. Nucleus Mitochondrion. Golgi apparatus. Lysosome Note=Partially localizes to the

mitochondria (PubMed:14695174) Translocates to the nucleus upon genotoxic stress or TNF stimulation (By similarity). Translocates to the nucleus in response to TGFB1 (PubMed:19366691). Isoform 5 and isoform 6 may localize in the nucleus Localized to the lysosome probably upon binding to VOPP1 (PubMed:30285739). {ECO:0000250, ECO:0000269|PubMed:14695174, ECO:0000269|PubMed:19366691, ECO:0000269|PubMed:30285739}

Tissue Location

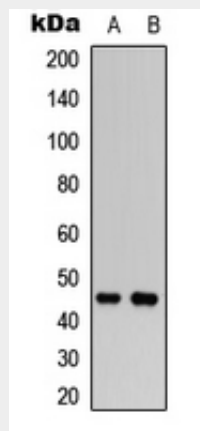
Widely expressed. Strongly expressed in testis, prostate, and ovary. Overexpressed in cancer cell lines. Isoform 5 and isoform 6 may only be expressed in tumor cell lines

Anti-WWOX Antibody - Protocols

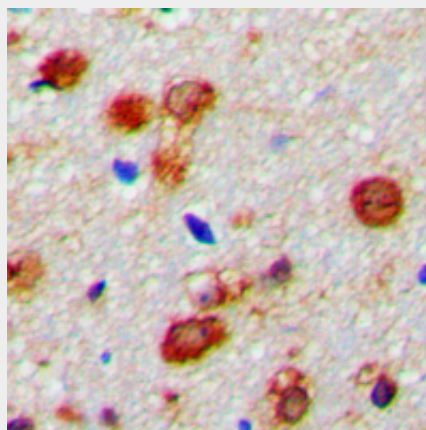
Provided below are standard protocols that you may find useful for product applications.

- [Western Blot](#)
- [Blocking Peptides](#)
- [Dot Blot](#)
- [Immunohistochemistry](#)
- [Immunofluorescence](#)
- [Immunoprecipitation](#)
- [Flow Cytometry](#)
- [Cell Culture](#)

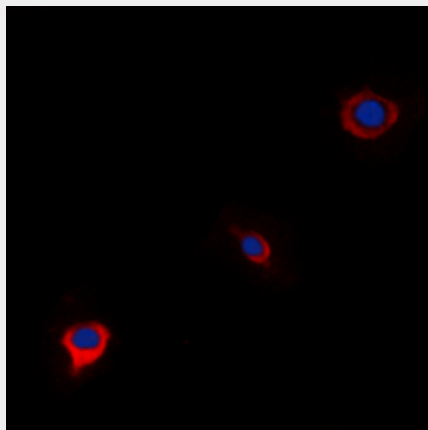
Anti-WWOX Antibody - Images



Western blot analysis of WWOX expression in Raji (A), mouse brain (B) whole cell lysates.



Immunohistochemical analysis of WWOX staining in human brain formalin fixed paraffin embedded tissue section. The section was pre-treated using heat mediated antigen retrieval with sodium citrate buffer (pH 6.0). The section was then incubated with the antibody at room temperature and detected using an HRP conjugated compact polymer system. DAB was used as the chromogen. The section was then counterstained with haematoxylin and mounted with DPX.



Immunofluorescent analysis of WWOX staining in A549 cells. Formalin-fixed cells were permeabilized with 0.1% Triton X-100 in TBS for 5-10 minutes and blocked with 3% BSA-PBS for 30 minutes at room temperature. Cells were probed with the primary antibody in 3% BSA-PBS and incubated overnight at 4 °C in a humidified chamber. Cells were washed with PBST and incubated with a DyLight 594-conjugated secondary antibody (red) in PBS at room temperature in the dark. DAPI was used to stain the cell nuclei (blue).

Anti-WWOX Antibody - Background

Rabbit polyclonal antibody to WWOX