

Anti-ZIC1/2/3/4/5 Antibody
Catalog # AP53880

Specification

Anti-ZIC1/2/3/4/5 Antibody - Product Information

Application	WB
Primary Accession	Q15915
Other Accession	O95409 , O60481 , Q8N9L1 , Q96T25
Reactivity	Human, Mouse, Rat
Host	Rabbit
Clonality	Polyclonal
Calculated MW	48309

Anti-ZIC1/2/3/4/5 Antibody - Additional Information

Gene ID 7545

Other Names

ZIC1; ZIC; ZNF201; Zinc finger protein ZIC 1; Zinc finger protein 201; Zinc finger protein of the cerebellum 1; ZIC2; Zinc finger protein ZIC 2; Zinc finger protein of the cerebellum 2; ZIC3; ZNF203; Zinc finger protein ZIC 3; Zinc finger protein 203; Zinc finger protein of the cerebellum 3; ZIC4; Zinc finger protein ZIC 4; Zinc finger protein of the cerebellum 4; ZIC5; Zinc finger protein ZIC 5; Zinc finger protein of the cerebellum 5

Target/Specificity

Recognizes endogenous levels of ZIC1/2/3/4/5 protein.

Dilution

WB~~1/500 - 1/1000

Format

Liquid in 0.42% Potassium phosphate, 0.87% Sodium chloride, pH 7.3, 30% glycerol, and 0.09% (W/V) sodium azide.

Storage

Store at -20 °C. Stable for 12 months from date of receipt

Anti-ZIC1/2/3/4/5 Antibody - Protein Information

Name ZIC1

Synonyms ZIC, ZNF201

Function

Acts as a transcriptional activator. Involved in neurogenesis. Plays important roles in the early stage of organogenesis of the CNS, as well as during dorsal spinal cord development and maturation of the cerebellum. Involved in the spatial distribution of mossy fiber (MF) neurons within the pontine gray nucleus (PGN). Plays a role in the regulation of MF axon pathway choice.

Promotes MF migration towards ipsilaterally-located cerebellar territories. May have a role in shear flow mechanotransduction in osteocytes. Retains nuclear GLI1 and GLI3 in the cytoplasm. Binds to the minimal GLI-consensus sequence 5'-TGGGTGGTC-3' (By similarity).

Cellular Location

Nucleus. Cytoplasm. Note=Localizes in the cytoplasm in presence of MDFIC overexpression.

Tissue Location

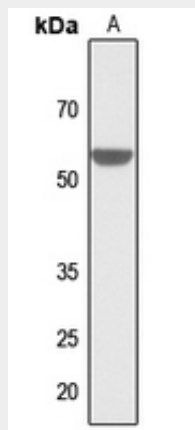
CNS. A high level expression is seen in the cerebellum. Detected in the nuclei of the cerebellar granule cell lineage from the progenitor cells of the external germinal layer to the postmigrated cells of the internal granular layer. Detected in medulloblastoma (26/29 cases), but not present in all other tumors examined.

Anti-ZIC1/2/3/4/5 Antibody - Protocols

Provided below are standard protocols that you may find useful for product applications.

- [Western Blot](#)
- [Blocking Peptides](#)
- [Dot Blot](#)
- [Immunohistochemistry](#)
- [Immunofluorescence](#)
- [Immunoprecipitation](#)
- [Flow Cytometry](#)
- [Cell Culture](#)

Anti-ZIC1/2/3/4/5 Antibody - Images



Western blot analysis of ZIC1/2/3/4/5 expression in rat brain (A) whole cell lysates.

Anti-ZIC1/2/3/4/5 Antibody - Background

Rabbit polyclonal antibody to ZIC1/2/3/4/5