

Anti-CD92 Antibody
Catalog # AP53871**Specification****Anti-CD92 Antibody - Product Information**

Application	WB
Primary Accession	Q8WWI5
Reactivity	Human, Mouse, Rat
Host	Rabbit
Clonality	Polyclonal
Calculated MW	73302

Anti-CD92 Antibody - Additional Information**Gene ID** 23446**Other Names**

CD92; CDW92; CTL1; Choline transporter-like protein 1; CDw92; Solute carrier family 44 member 1; CD92

Target/Specificity

Recognizes endogenous levels of CD92 protein.

Dilution

WB~~1/500 - 1/1000

Format

Liquid in 0.42% Potassium phosphate, 0.87% Sodium chloride, pH 7.3, 30% glycerol, and 0.09% (W/V) sodium azide.

Storage

Store at -20 °C. Stable for 12 months from date of receipt

Anti-CD92 Antibody - Protein Information**Name** SLC44A1 ([HGNC:18798](#))**Synonyms** CD92, CDW92, CTL1**Function**

Choline/H⁺ antiporter (PubMed:19357133, PubMed:23651124, PubMed:31855247, PubMed:33789160). Also acts as a high-affinity ethanolamine/H⁺ antiporter, regulating the supply of extracellular ethanolamine (Etn) for the CDP-Etn pathway, redistribute intracellular Etn and balance the CDP-Cho and CDP-Etn arms of the Kennedy pathway (PubMed:33789160). Involved in

membrane synthesis and myelin production (PubMed:31855247).

Cellular Location

Cell membrane; Multi-pass membrane protein. Mitochondrion outer membrane; Multi-pass membrane protein

Tissue Location

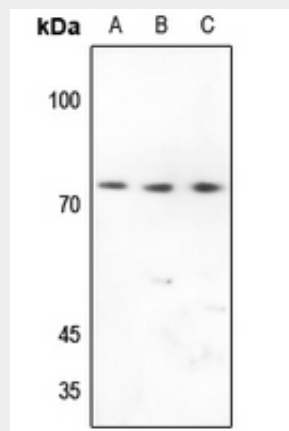
Expressed in various cells of the hematopoietic system.

Anti-CD92 Antibody - Protocols

Provided below are standard protocols that you may find useful for product applications.

- [Western Blot](#)
- [Blocking Peptides](#)
- [Dot Blot](#)
- [Immunohistochemistry](#)
- [Immunofluorescence](#)
- [Immunoprecipitation](#)
- [Flow Cytometry](#)
- [Cell Culture](#)

Anti-CD92 Antibody - Images



Western blot analysis of CD92 expression in HEK293T (A), HeLa (B), H446 (C) whole cell lysates.

Anti-CD92 Antibody - Background

Rabbit polyclonal antibody to CD92