

**Anti-Serpin B3/4 Antibody**  
Catalog # AP53869**Specification**

---

**Anti-Serpin B3/4 Antibody - Product Information**

|                   |                          |
|-------------------|--------------------------|
| Application       | <b>WB</b>                |
| Primary Accession | <a href="#">P29508</a>   |
| Other Accession   | <a href="#">P48594</a>   |
| Reactivity        | <b>Human, Mouse, Rat</b> |
| Host              | <b>Rabbit</b>            |
| Clonality         | <b>Polyclonal</b>        |
| Calculated MW     | <b>44565</b>             |

**Anti-Serpin B3/4 Antibody - Additional Information****Gene ID** 6317**Other Names**

SERPINB3; SCCA; SCCA1; Serpin B3; Protein T4-A; Squamous cell carcinoma antigen 1; SCCA-1

**Target/Specificity**

Recognizes endogenous levels of Serpin B3/4 protein.

**Dilution**

WB~~1/500 - 1/1000

**Format**

Liquid in 0.42% Potassium phosphate, 0.87% Sodium chloride, pH 7.3, 30% glycerol, and 0.09% (W/V) sodium azide.

**Storage**

Store at -20 °C. Stable for 12 months from date of receipt

**Anti-Serpin B3/4 Antibody - Protein Information****Name** SERPINB3**Synonyms** SCCA, SCCA1**Function**

May act as a papain-like cysteine protease inhibitor to modulate the host immune response against tumor cells. Also functions as an inhibitor of UV-induced apoptosis via suppression of the activity of c-Jun NH(2)-terminal kinase (JNK1).

**Cellular Location**

Cytoplasm. Note=Seems to also be secreted in plasma by cancerous cells but at a low level

**Tissue Location**

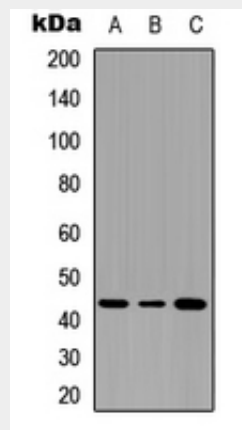
Squamous cells. Expressed in some hepatocellular carcinoma (at protein level).

### Anti-Serpin B3/4 Antibody - Protocols

Provided below are standard protocols that you may find useful for product applications.

- [Western Blot](#)
- [Blocking Peptides](#)
- [Dot Blot](#)
- [Immunohistochemistry](#)
- [Immunofluorescence](#)
- [Immunoprecipitation](#)
- [Flow Cytometry](#)
- [Cell Culture](#)

### Anti-Serpin B3/4 Antibody - Images



Western blot analysis of Serpin B3/4 expression in THP1 (A), NS-1 (B), PC12 (C) whole cell lysates.

### Anti-Serpin B3/4 Antibody - Background

Rabbit polyclonal antibody to Serpin B3/4