

Anti-S100-A7 Antibody
Catalog # AP53868**Specification**

Anti-S100-A7 Antibody - Product Information

Application	WB
Primary Accession	P31151
Reactivity	Human, Mouse, Rat
Host	Rabbit
Clonality	Polyclonal
Calculated MW	11471

Anti-S100-A7 Antibody - Additional Information**Gene ID** 6278**Other Names**

PSOR1; S100A7C; Protein S100-A7; Psoriasin; S100 calcium-binding protein A7

Target/Specificity

Recognizes endogenous levels of S100-A7 protein.

Dilution

WB~~1/500 - 1/1000

Format

Liquid in 0.42% Potassium phosphate, 0.87% Sodium chloride, pH 7.3, 30% glycerol, and 0.09% (W/V) sodium azide.

Storage

Store at -20 °C. Stable for 12 months from date of receipt

Anti-S100-A7 Antibody - Protein Information**Name** S100A7**Synonyms** PSOR1, S100A7C**Cellular Location**

Cytoplasm. Secreted. Note=Secreted by a non-classical secretory pathway

Tissue Location

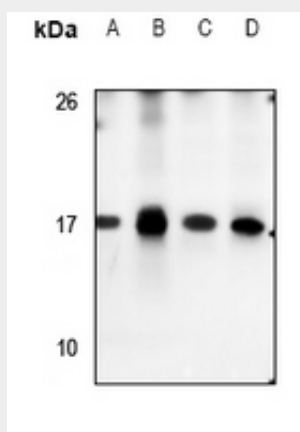
Fetal ear, skin, and tongue and human cell lines. Highly up-regulated in psoriatic epidermis. Also highly expressed in the urine of bladder squamous cell carcinoma (SCC) bearing patients

Anti-S100-A7 Antibody - Protocols

Provided below are standard protocols that you may find useful for product applications.

- [Western Blot](#)
- [Blocking Peptides](#)
- [Dot Blot](#)
- [Immunohistochemistry](#)
- [Immunofluorescence](#)
- [Immunoprecipitation](#)
- [Flow Cytometry](#)
- [Cell Culture](#)

Anti-S100-A7 Antibody - Images



Western blot analysis of S100-A7 expression in mouse testis (A), HeLa (B), EC9706 (C), K562 (D) whole cell lysates.

Anti-S100-A7 Antibody - Background

Rabbit polyclonal antibody to S100-A7