

Anti-ROBO2 Antibody
Catalog # AP53866**Specification**

Anti-ROBO2 Antibody - Product Information

Application	WB
Primary Accession	Q9HCK4
Reactivity	Human, Mouse, Rat
Host	Rabbit
Clonality	Polyclonal
Calculated MW	151200

Anti-ROBO2 Antibody - Additional Information**Gene ID** 6092**Other Names**

KIAA1568; Roundabout homolog 2

Target/Specificity

Recognizes endogenous levels of ROBO2 protein.

Dilution

WB~~1/500 - 1/1000

Format

Liquid in 0.42% Potassium phosphate, 0.87% Sodium chloride, pH 7.3, 30% glycerol, and 0.09% (W/V) sodium azide.

Storage

Store at -20 °C. Stable for 12 months from date of receipt

Anti-ROBO2 Antibody - Protein Information**Name** ROBO2**Synonyms** KIAA1568**Function**

Receptor for SLIT2, and probably SLIT1, which are thought to act as molecular guidance cue in cellular migration, including axonal navigation at the ventral midline of the neural tube and projection of axons to different regions during neuronal development.

Cellular Location

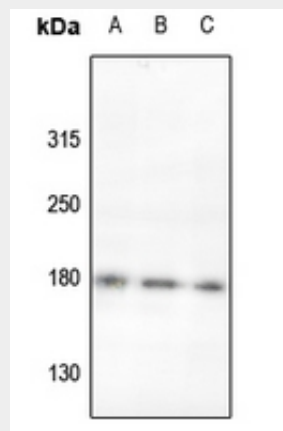
Membrane; Single-pass type I membrane protein

Anti-ROBO2 Antibody - Protocols

Provided below are standard protocols that you may find useful for product applications.

- [Western Blot](#)
- [Blocking Peptides](#)
- [Dot Blot](#)
- [Immunohistochemistry](#)
- [Immunofluorescence](#)
- [Immunoprecipitation](#)
- [Flow Cytometry](#)
- [Cell Culture](#)

Anti-ROBO2 Antibody - Images



Western blot analysis of ROBO2 expression in mouse lung (A), A549 (B), HEK293T (C) whole cell lysates.

Anti-ROBO2 Antibody - Background

Rabbit polyclonal antibody to ROBO2