

Anti-MYO1D Antibody
Catalog # AP53856**Specification****Anti-MYO1D Antibody - Product Information**

Application	WB
Primary Accession	O94832
Reactivity	Human, Mouse, Rat
Host	Rabbit
Clonality	Polyclonal
Calculated MW	116202

Anti-MYO1D Antibody - Additional Information**Gene ID** 4642**Other Names**

KIAA0727; Unconventional myosin-Id

Target/Specificity

Recognizes endogenous levels of MYO1D protein.

Dilution

WB~~1/500 - 1/1000

Format

Liquid in 0.42% Potassium phosphate, 0.87% Sodium chloride, pH 7.3, 30% glycerol, and 0.09% (W/V) sodium azide.

Storage

Store at -20 °C. Stable for 12 months from date of receipt

Anti-MYO1D Antibody - Protein Information**Name** MYO1D**Synonyms** KIAA0727**Function**

Unconventional myosin that functions as actin-based motor protein with ATPase activity (By similarity). Plays a role in endosomal protein trafficking, and especially in the transfer of cargo proteins from early to recycling endosomes (By similarity). Required for normal planar cell polarity in ciliated tracheal cells, for normal rotational polarity of cilia, and for coordinated, unidirectional ciliary movement in the trachea. Required for normal, polarized cilia organization in brain ependymal epithelial cells (By similarity).

Cellular Location

Cytoplasm {ECO:0000250|UniProtKB:Q63357}. Perikaryon {ECO:0000250|UniProtKB:Q63357}.

Cell projection, dendrite {ECO:0000250|UniProtKB:Q63357}. Early endosome {ECO:0000250|UniProtKB:F1PRN2}. Cytoplasm, cell cortex {ECO:0000250|UniProtKB:Q63357}. Note=Colocalizes with the actin cytoskeleton in the cell cortex close to the apical cell membrane Colocalizes with cytoplasmic puncta that are reminiscent of transport vesicles. {ECO:0000250|UniProtKB:Q63357}

Tissue Location

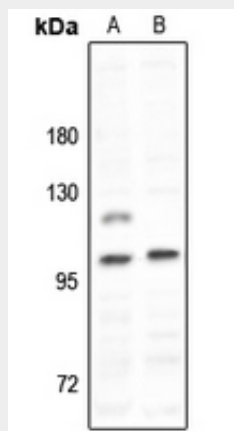
Expressed in many tissues. Highest levels in brain, followed by lung and ovary; expression is lowest in spleen

Anti-MYO1D Antibody - Protocols

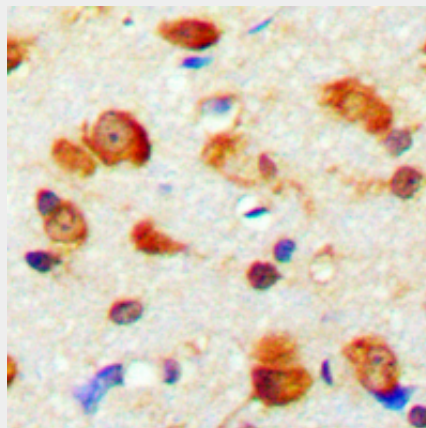
Provided below are standard protocols that you may find useful for product applications.

- [Western Blot](#)
- [Blocking Peptides](#)
- [Dot Blot](#)
- [Immunohistochemistry](#)
- [Immunofluorescence](#)
- [Immunoprecipitation](#)
- [Flow Cytometry](#)
- [Cell Culture](#)

Anti-MYO1D Antibody - Images



Western blot analysis of MYO1D expression in rat brain (A), A2780 (B) whole cell lysates.



Immunohistochemical analysis of MYO1D staining in human brain formalin fixed paraffin embedded tissue section. The section was pre-treated using heat mediated antigen retrieval with sodium citrate buffer (pH 6.0). The section was then incubated with the antibody at room temperature and detected using an HRP conjugated compact polymer system. DAB was used as the chromogen. The section was then counterstained with haematoxylin and mounted with DPX.

Anti-MYO1D Antibody - Background

Rabbit polyclonal antibody to MYO1D