

Anti-Frizzled 1/2/7 Antibody
Catalog # AP53848**Specification****Anti-Frizzled 1/2/7 Antibody - Product Information**

Application	WB
Primary Accession	Q9UP38
Other Accession	Q14332 , O75084
Reactivity	Human, Mouse, Rat
Host	Rabbit
Clonality	Polyclonal
Calculated MW	71158

Anti-Frizzled 1/2/7 Antibody - Additional Information**Gene ID** 8321**Other Names**

Frizzled-7; Fz-7; hFz7; FzE3

Target/Specificity

Recognizes endogenous levels of Frizzled 1/2/7 protein.

Dilution

WB~~1/500 - 1/1000

Format

Liquid in 0.42% Potassium phosphate, 0.87% Sodium chloride, pH 7.3, 30% glycerol, and 0.09% (W/V) sodium azide.

Storage

Store at -20 °C. Stable for 12 months from date of receipt

Anti-Frizzled 1/2/7 Antibody - Protein Information**Name** FZD1**Function**

Receptor for Wnt proteins (PubMed: [10557084](http://www.uniprot.org/citations/10557084)). Activated by WNT3A, WNT3, WNT1 and to a lesser extent WNT2, but apparently not by WNT4, WNT5A, WNT5B, WNT6, WNT7A or WNT7B (PubMed: [10557084](http://www.uniprot.org/citations/10557084)). Contradictory results showing activation by WNT7B have been described for mouse (By similarity). Functions in the canonical Wnt/beta-catenin signaling pathway (PubMed: [10557084](http://www.uniprot.org/citations/10557084)). The canonical Wnt/beta-catenin signaling pathway leads to the activation of disheveled proteins, inhibition of GSK-3 kinase, nuclear accumulation of beta-catenin and activation of Wnt target genes (PubMed: [10557084](http://www.uniprot.org/citations/10557084))

target="_blank">10557084). A second signaling pathway involving PKC and calcium fluxes has been seen for some family members, but it is not yet clear if it represents a distinct pathway or if it can be integrated in the canonical pathway, as PKC seems to be required for Wnt-mediated inactivation of GSK-3 kinase. Both pathways seem to involve interactions with G-proteins. May be involved in transduction and intercellular transmission of polarity information during tissue morphogenesis and/or in differentiated tissues (Probable).

Cellular Location

Cell membrane; Multi-pass membrane protein

Tissue Location

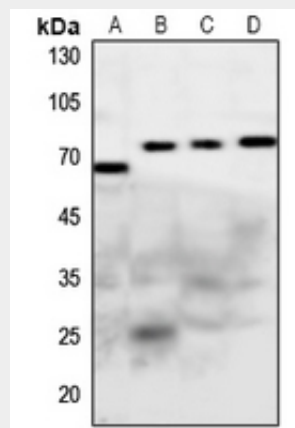
Expressed in adult heart, placenta, lung, kidney, pancreas, prostate, and ovary and in fetal lung and kidney

Anti-Frizzled 1/2/7 Antibody - Protocols

Provided below are standard protocols that you may find useful for product applications.

- [Western Blot](#)
- [Blocking Peptides](#)
- [Dot Blot](#)
- [Immunohistochemistry](#)
- [Immunofluorescence](#)
- [Immunoprecipitation](#)
- [Flow Cytometry](#)
- [Cell Culture](#)

Anti-Frizzled 1/2/7 Antibody - Images



Western blot analysis of Frizzled 1/2/7 expression in Hela (A), mouse heart (B), rat heart (C), rat kidney (D) whole cell lysates.

Anti-Frizzled 1/2/7 Antibody - Background

Rabbit polyclonal antibody to Frizzled 1/2/7