

Anti-Procalcitonin Antibody
Catalog # AP53846**Specification**

Anti-Procalcitonin Antibody - Product Information

Application	WB
Primary Accession	P01258
Other Accession	P06881
Reactivity	Human, Rat
Host	Rabbit
Clonality	Polyclonal
Calculated MW	15467

Anti-Procalcitonin Antibody - Additional Information**Gene ID** 796**Other Names**

CALCA; CALC1; Calcitonin gene-related peptide 1; Alpha-type CGRP; Calcitonin gene-related peptide I; CGRP-I; CALCA; CALC1; Calcitonin

Target/Specificity

Recognizes endogenous levels of Procalcitonin protein.

Dilution

WB~~1/500 - 1/1000

Format

Liquid in 0.42% Potassium phosphate, 0.87% Sodium chloride, pH 7.3, 30% glycerol, and 0.09% (W/V) sodium azide.

Storage

Store at -20 °C. Stable for 12 months from date of receipt

Anti-Procalcitonin Antibody - Protein Information**Name** CALCA ([HGNC:1437](#))**Synonyms** CALC1**Function**

[Calcitonin]: Calcitonin is a peptide hormone that causes a rapid but short-lived drop in the level of calcium and phosphate in blood by promoting the incorporation of those ions in the bones. Calcitonin function is mediated by the calcitonin receptor/CALCR and the CALCR-RAMP2 (AMYR2) receptor complex (PubMed: <http://www.uniprot.org/citations/35324283> target="_blank">35324283).

Cellular Location

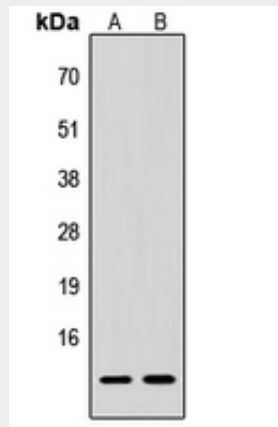
Secreted.

Anti-Procalcitonin Antibody - Protocols

Provided below are standard protocols that you may find useful for product applications.

- [Western Blot](#)
- [Blocking Peptides](#)
- [Dot Blot](#)
- [Immunohistochemistry](#)
- [Immunofluorescence](#)
- [Immunoprecipitation](#)
- [Flow Cytometry](#)
- [Cell Culture](#)

Anti-Procalcitonin Antibody - Images



Western blot analysis of Procalcitonin expression in HeLa (A), H9C2 (B) whole cell lysates.

Anti-Procalcitonin Antibody - Background

Rabbit polyclonal antibody to Procalcitonin