

Anti-RNASE4 Antibody
Catalog # AP53829**Specification**

Anti-RNASE4 Antibody - Product Information

Application	WB
Primary Accession	P34096
Reactivity	Human, Mouse, Rat
Host	Rabbit
Clonality	Polyclonal
Calculated MW	16840

Anti-RNASE4 Antibody - Additional Information**Gene ID** 6038**Other Names**

RNS4; Ribonuclease 4; RNase 4

Target/Specificity

Recognizes endogenous levels of RNASE4 protein.

Dilution

WB~~1/500 - 1/1000

Format

Liquid in 0.42% Potassium phosphate, 0.87% Sodium chloride, pH 7.3, 30% glycerol, and 0.09% (W/V) sodium azide.

Storage

Store at -20 °C. Stable for 12 months from date of receipt

Anti-RNASE4 Antibody - Protein Information**Name** RNASE4**Synonyms** RNS4**Function**

Cleaves preferentially after uridine bases (PubMed: [3467790](http://www.uniprot.org/citations/3467790)). Has antimicrobial activity against uropathogenic E.coli (UPEC) (PubMed: [33818125](http://www.uniprot.org/citations/33818125)). Probably contributes to urinary tract sterility (PubMed: [33818125](http://www.uniprot.org/citations/33818125)).

Cellular Location

Secreted. Note=Detected in urine.

Tissue Location

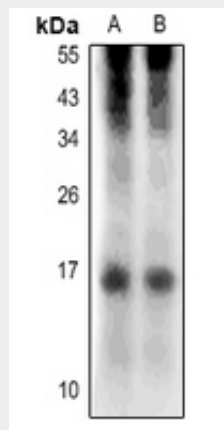
Expressed in the cortical and medullary tubules of the kidney, and in the transitional epithelium of the urinary bladder (at protein level).

Anti-RNASE4 Antibody - Protocols

Provided below are standard protocols that you may find useful for product applications.

- [Western Blot](#)
- [Blocking Peptides](#)
- [Dot Blot](#)
- [Immunohistochemistry](#)
- [Immunofluorescence](#)
- [Immunoprecipitation](#)
- [Flow Cytometry](#)
- [Cell Culture](#)

Anti-RNASE4 Antibody - Images



Western blot analysis of RNASE4 expression in PC12 (A), AML12 (B) whole cell lysates.

Anti-RNASE4 Antibody - Background

Rabbit polyclonal antibody to RNASE4