

**Anti-GPCR19 Antibody**  
Catalog # AP53816**Specification**

---

**Anti-GPCR19 Antibody - Product Information**

Application	WB
Primary Accession	<a href="#">Q8TDU6</a>
Reactivity	Human, Mouse, Rat
Host	Rabbit
Clonality	Polyclonal
Calculated MW	35248

**Anti-GPCR19 Antibody - Additional Information****Gene ID** 151306**Other Names**

TGR5; G-protein coupled bile acid receptor 1; G-protein coupled receptor GPCR19; hGPCR19; Membrane-type receptor for bile acids; M-BAR; hBG37; BG37

**Target/Specificity**

Recognizes endogenous levels of GPCR19 protein.

**Dilution**

WB~~1/500 - 1/1000

**Format**

Liquid in 0.42% Potassium phosphate, 0.87% Sodium chloride, pH 7.3, 30% glycerol, and 0.09% (W/V) sodium azide.

**Storage**

Store at -20 °C. Stable for 12 months from date of receipt

**Anti-GPCR19 Antibody - Protein Information****Name** GPBAR1**Synonyms** TGR5**Function**

Receptor for bile acid. Bile acid-binding induces its internalization, activation of extracellular signal-regulated kinase and intracellular cAMP production. May be involved in the suppression of macrophage functions by bile acids.

**Cellular Location**

Cell membrane; Multi-pass membrane protein

**Tissue Location**

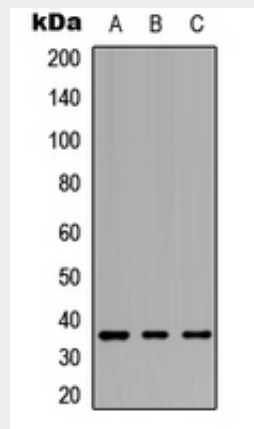
Ubiquitously expressed. Expressed at higher level in spleen and placenta. Expressed at lower level in other tissues. In digestive tissues, it is expressed in stomach, duodenum, ileocecum, ileum, jejunum, ascending colon, transverse colon, descending colon, cecum and liver, but not in esophagus and rectum

### Anti-GPCR19 Antibody - Protocols

Provided below are standard protocols that you may find useful for product applications.

- [Western Blot](#)
- [Blocking Peptides](#)
- [Dot Blot](#)
- [Immunohistochemistry](#)
- [Immunofluorescence](#)
- [Immunoprecipitation](#)
- [Flow Cytometry](#)
- [Cell Culture](#)

### Anti-GPCR19 Antibody - Images



Western blot analysis of GPCR19 expression in HEK293T (A), Raw264.7 (B), PC12 (C) whole cell lysates.

### Anti-GPCR19 Antibody - Background

Rabbit polyclonal antibody to GPCR19