

**Anti-CD66c Antibody**  
Catalog # AP53806**Specification**

---

**Anti-CD66c Antibody - Product Information**

Application	<b>WB</b>
Primary Accession	<a href="#">P40199</a>
Reactivity	<b>Human, Mouse, Rat</b>
Host	<b>Rabbit</b>
Clonality	<b>Polyclonal</b>
Calculated MW	<b>37237</b>

**Anti-CD66c Antibody - Additional Information****Gene ID** 4680**Other Names**

NCA; Carcinoembryonic antigen-related cell adhesion molecule 6; Non-specific crossreacting antigen; Normal cross-reacting antigen; CD66c

**Target/Specificity**

Recognizes endogenous levels of CD66c protein.

**Dilution**

WB~~1/500 - 1/1000

**Format**

Liquid in 0.42% Potassium phosphate, 0.87% Sodium chloride, pH 7.3, 30% glycerol, and 0.09% (W/V) sodium azide.

**Storage**

Store at -20 °C. Stable for 12 months from date of receipt

**Anti-CD66c Antibody - Protein Information****Name** CEACAM6**Synonyms** NCA**Function**

Cell surface glycoprotein that plays a role in cell adhesion and tumor progression (PubMed:&lt;a href="http://www.uniprot.org/citations/10910050" target="\_blank"&gt;10910050&lt;/a&gt;, PubMed:&lt;a href="http://www.uniprot.org/citations/11590190" target="\_blank"&gt;11590190&lt;/a&gt;, PubMed:&lt;a href="http://www.uniprot.org/citations/1378450" target="\_blank"&gt;1378450&lt;/a&gt;, PubMed:&lt;a href="http://www.uniprot.org/citations/14724575" target="\_blank"&gt;14724575&lt;/a&gt;, PubMed:&lt;a href="http://www.uniprot.org/citations/16204051" target="\_blank"&gt;16204051&lt;/a&gt;, PubMed:&lt;a href="http://www.uniprot.org/citations/2022629" target="\_blank"&gt;2022629&lt;/a&gt;, PubMed:&lt;a href="http://www.uniprot.org/citations/2803308" target="\_blank"&gt;2803308&lt;/a&gt;, PubMed:&lt;a

<http://www.uniprot.org/citations/8776764> target="\_blank">8776764</a>). Intercellular adhesion occurs in a calcium- and fibronectin-independent manner (PubMed:<a href="http://www.uniprot.org/citations/16204051" target="\_blank">16204051</a>, PubMed:<a href="http://www.uniprot.org/citations/2022629" target="\_blank">2022629</a>). Mediates homophilic and heterophilic cell adhesion with other carcinoembryonic antigen-related cell adhesion molecules, such as CEACAM5 and CEACAM8 (PubMed:<a href="http://www.uniprot.org/citations/11590190" target="\_blank">11590190</a>, PubMed:<a href="http://www.uniprot.org/citations/16204051" target="\_blank">16204051</a>, PubMed:<a href="http://www.uniprot.org/citations/2022629" target="\_blank">2022629</a>, PubMed:<a href="http://www.uniprot.org/citations/2803308" target="\_blank">2803308</a>, PubMed:<a href="http://www.uniprot.org/citations/8776764" target="\_blank">8776764</a>). Heterophilic interaction with CEACAM8 occurs in activated neutrophils (PubMed:<a href="http://www.uniprot.org/citations/8776764" target="\_blank">8776764</a>). Plays a role in neutrophil adhesion to cytokine- activated endothelial cells (PubMed:<a href="http://www.uniprot.org/citations/1378450" target="\_blank">1378450</a>). Plays a role as an oncogene by promoting tumor progression; positively regulates cell migration, cell adhesion to endothelial cells and cell invasion (PubMed:<a href="http://www.uniprot.org/citations/16204051" target="\_blank">16204051</a>). Also involved in the metastatic cascade process by inducing gain resistance to anoikis of pancreatic adenocarcinoma and colorectal carcinoma cells (PubMed:<a href="http://www.uniprot.org/citations/10910050" target="\_blank">10910050</a>, PubMed:<a href="http://www.uniprot.org/citations/14724575" target="\_blank">14724575</a>).

#### Cellular Location

Cell membrane; Lipid-anchor, GPI-anchor. Apical cell membrane. Cell surface. Note=Localized to the apical glycocalyx surface.

#### Tissue Location

Expressed in neutrophils (PubMed:1378450). Expressed in columnar epithelial and goblet cells of the colon (PubMed:10436421). Expressed in numerous tumor cell lines (at protein level) (PubMed:16204051).

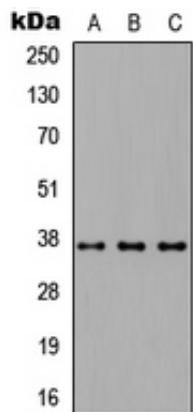
#### Anti-CD66c Antibody - Protocols

Provided below are standard protocols that you may find useful for product applications.

- [Western Blot](#)
- [Blocking Peptides](#)
- [Dot Blot](#)
- [Immunohistochemistry](#)
- [Immunofluorescence](#)
- [Immunoprecipitation](#)
- [Flow Cytometry](#)
- [Cell Culture](#)

#### Anti-CD66c Antibody - Images





Western blot analysis of CD66c expression in HEK293T (A), NS-1 (B), PC12 (C) whole cell lysates.

#### **Anti-CD66c Antibody - Background**

Rabbit polyclonal antibody to CD66c