

Anti-Carboxypeptidase D Antibody Catalog # AP53805

Specification

Anti-Carboxypeptidase D Antibody - Product Information

Application	WB
Primary Accession	O75976
Reactivity	Human, Mouse, Rat
Host	Rabbit
Clonality	Polyclonal
Calculated MW	152931

Anti-Carboxypeptidase D Antibody - Additional Information

Gene ID 1362

Other Names

Carboxypeptidase D; Metallo-carboxypeptidase D; gp180

Target/Specificity

Recognizes endogenous levels of Carboxypeptidase D protein.

Dilution

WB~~1/500 - 1/1000

Format

Liquid in 0.42% Potassium phosphate, 0.87% Sodium chloride, pH 7.3, 30% glycerol, and 0.09% (W/V) sodium azide.

Storage

Store at -20 °C. Stable for 12 months from date of receipt

Anti-Carboxypeptidase D Antibody - Protein Information

Name CPD

Cellular Location

Cell membrane {ECO:0000250|UniProtKB:Q90240}; Single-pass type I membrane protein

Tissue Location

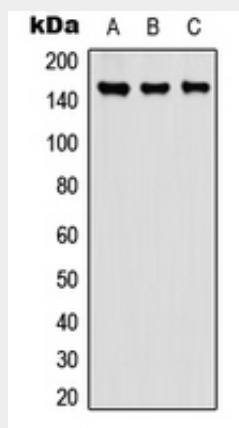
Highly expressed in placenta, pancreas and hepatoma cells. Lower levels found in skeletal muscle, heart and colon carcinoma and melanoma cell lines

Anti-Carboxypeptidase D Antibody - Protocols

Provided below are standard protocols that you may find useful for product applications.

- [Western Blot](#)
- [Blocking Peptides](#)
- [Dot Blot](#)
- [Immunohistochemistry](#)
- [Immunofluorescence](#)
- [Immunoprecipitation](#)
- [Flow Cytometry](#)
- [Cell Culture](#)

Anti-Carboxypeptidase D Antibody - Images



Western blot analysis of Carboxypeptidase D expression in A549 (A), NS-1 (B), PC12 (C) whole cell lysates.

Anti-Carboxypeptidase D Antibody - Background

Rabbit polyclonal antibody to Carboxypeptidase D