

Anti-Beta-tubulin Antibody
Catalog # AP53802**Specification****Anti-Beta-tubulin Antibody - Product Information**

Application	WB
Primary Accession	Q9H4B7
Other Accession	Q13885 , Q9BVA1 , P68371 , Q13509 , Q99867 , P04350 , P07437 , Q9BUF5 , Q3ZCM7
Reactivity	Human, Mouse, Rat
Host	Rabbit
Clonality	Polyclonal
Calculated MW	50327

Anti-Beta-tubulin Antibody - Additional Information

Gene ID 81027

Other Names

TUBB1; Tubulin beta-1 chain; TUBB2A; TUBB2; Tubulin beta-2A chain; TUBB2B; Tubulin beta-2B chain; TUBB4B; TUBB2C; Tubulin beta-4B chain; Tubulin beta-2 chain; Tubulin beta-2C chain; TUBB3; TUBB4; Tubulin beta-3 chain; Tubulin beta-4 chain; Tubulin beta-III; TUBB4A; TUBB4; TUBB5; Tubulin beta-4A chain; Tubulin 5 beta; Tubulin beta-4 chain; TUBB; TUBB5; OK/SW-cl.56; Tubulin beta chain; Tubulin beta-5 chain; TUBB6; Tubulin beta-6 chain; TUBB8; Tubulin beta-8 chain

Target/Specificity

Recognizes endogenous levels of Beta-tubulin protein.

Dilution

WB~~1/500 - 1/1000

Format

Liquid in 0.42% Potassium phosphate, 0.87% Sodium chloride, pH 7.3, 30% glycerol, and 0.09% (W/V) sodium azide.

Storage

Store at -20 °C. Stable for 12 months from date of receipt

Anti-Beta-tubulin Antibody - Protein Information

Name TUBB1

Function

Tubulin is the major constituent of microtubules, a cylinder consisting of laterally associated linear protofilaments composed of alpha- and beta-tubulin heterodimers. Microtubules grow by the addition of GTP-tubulin dimers to the microtubule end, where a stabilizing cap forms. Below the cap, tubulin dimers are in GDP-bound state, owing to GTPase activity of alpha-tubulin.

Cellular Location

Cytoplasm, cytoskeleton

Tissue Location

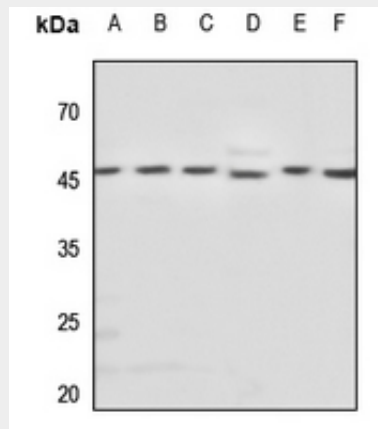
Hematopoietic cell-specific. Major isotype in leukocytes, where it represents 50% of all beta-tubulins

Anti-Beta-tubulin Antibody - Protocols

Provided below are standard protocols that you may find useful for product applications.

- [Western Blot](#)
- [Blocking Peptides](#)
- [Dot Blot](#)
- [Immunohistochemistry](#)
- [Immunofluorescence](#)
- [Immunoprecipitation](#)
- [Flow Cytometry](#)
- [Cell Culture](#)

Anti-Beta-tubulin Antibody - Images



Western blot analysis of Beta-tubulin expression in HEK293T (A), HeLa (B), H460 (C), mouse spleen (D), rat lung (E), rat spleen (F) whole cell lysates.

Anti-Beta-tubulin Antibody - Background

Rabbit polyclonal antibody to Beta-tubulin