

Anti-ARHGAP20 Antibody
Catalog # AP53801**Specification**

Anti-ARHGAP20 Antibody - Product Information

Application	WB
Primary Accession	Q9P2F6
Reactivity	Human, Rat
Host	Rabbit
Clonality	Polyclonal
Calculated MW	132608

Anti-ARHGAP20 Antibody - Additional Information**Gene ID** 57569**Other Names**

KIAA1391; Rho GTPase-activating protein 20; Rho-type GTPase-activating protein 20

Target/Specificity

Recognizes endogenous levels of ARHGAP20 protein.

Dilution

WB~~1/500 - 1/1000

Format

Liquid in 0.42% Potassium phosphate, 0.87% Sodium chloride, pH 7.3, 30% glycerol, and 0.09% (W/V) sodium azide.

Storage

Store at -20 °C. Stable for 12 months from date of receipt

Anti-ARHGAP20 Antibody - Protein Information**Name** ARHGAP20**Synonyms** KIAA1391**Function**

GTPase activator for the Rho-type GTPases by converting them to an inactive GDP-bound state.

Tissue Location

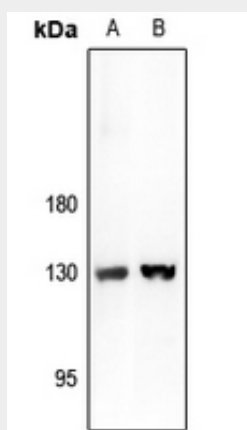
Expressed predominantly in the brain. Lower expression is found in lymph nodes.

Anti-ARHGAP20 Antibody - Protocols

Provided below are standard protocols that you may find useful for product applications.

- [Western Blot](#)
- [Blocking Peptides](#)
- [Dot Blot](#)
- [Immunohistochemistry](#)
- [Immunofluorescence](#)
- [Immunoprecipitation](#)
- [Flow Cytometry](#)
- [Cell Culture](#)

Anti-ARHGAP20 Antibody - Images



Western blot analysis of ARHGAP20 expression in C6 (A), HeLa (B) whole cell lysates.

Anti-ARHGAP20 Antibody - Background

Rabbit polyclonal antibody to ARHGAP20