

Anti-AChE Q Antibody
Catalog # AP53799**Specification**

Anti-AChE Q Antibody - Product Information

Application	WB
Primary Accession	O9Y215
Reactivity	Human, Mouse, Rat
Host	Rabbit
Clonality	Polyclonal
Calculated MW	47766

Anti-AChE Q Antibody - Additional Information**Gene ID** 8292**Other Names**

Acetylcholinesterase collagenic tail peptide; AChE Q subunit; Acetylcholinesterase-associated collagen

Target/Specificity

Recognizes endogenous levels of AChE Q protein.

Dilution

WB~~1/500 - 1/1000

Format

Liquid in 0.42% Potassium phosphate, 0.87% Sodium chloride, pH 7.3, 30% glycerol, and 0.09% (W/V) sodium azide.

Storage

Store at -20 °C. Stable for 12 months from date of receipt

Anti-AChE Q Antibody - Protein Information**Name** COLQ**Function**

Anchors the catalytic subunits of asymmetric AChE to the synaptic basal lamina.

Cellular Location

Synapse.

Tissue Location

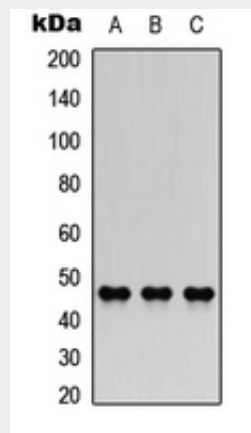
Found at the end plate of skeletal muscle.

Anti-AChE Q Antibody - Protocols

Provided below are standard protocols that you may find useful for product applications.

- [Western Blot](#)
- [Blocking Peptides](#)
- [Dot Blot](#)
- [Immunohistochemistry](#)
- [Immunofluorescence](#)
- [Immunoprecipitation](#)
- [Flow Cytometry](#)
- [Cell Culture](#)

Anti-AChE Q Antibody - Images



Western blot analysis of AChE Q expression in A549 (A), NS-1 (B), H9C2 (C) whole cell lysates.

Anti-AChE Q Antibody - Background

Rabbit polyclonal antibody to AChE Q