

**Anti-CEP41 Antibody**  
**Catalog # AP53789****Specification**

---

**Anti-CEP41 Antibody - Product Information**

|                   |                        |
|-------------------|------------------------|
| Application       | WB                     |
| Primary Accession | <a href="#">Q9BYV8</a> |
| Reactivity        | Human, Mouse, Rat      |
| Host              | Rabbit                 |
| Clonality         | Polyclonal             |
| Calculated MW     | 41368                  |

**Anti-CEP41 Antibody - Additional Information****Gene ID** 95681**Other Names**

TSGA14; Centrosomal protein of 41 kDa; Cep41; Testis-specific gene A14 protein

**Target/Specificity**

Recognizes endogenous levels of CEP41 protein.

**Dilution**

WB~~1/500 - 1/1000

**Format**

Liquid in 0.42% Potassium phosphate, 0.87% Sodium chloride, pH 7.3, 30% glycerol, and 0.09% (W/V) sodium azide.

**Storage**

Store at -20 °C.Stable for 12 months from date of receipt

**Anti-CEP41 Antibody - Protein Information****Name** CEP41**Synonyms** TSGA14**Function**

Required during ciliogenesis for tubulin glutamylation in cilium. Probably acts by participating in the transport of TTLL6, a tubulin polyglutamylase, between the basal body and the cilium.

**Cellular Location**

Cytoplasm, cytoskeleton, microtubule organizing center, centrosome. Cell projection, cilium. Cytoplasm, cytoskeleton, cilium basal body. Note=Localizes mainly to the cilium basal body and in primary cilia

**Tissue Location**

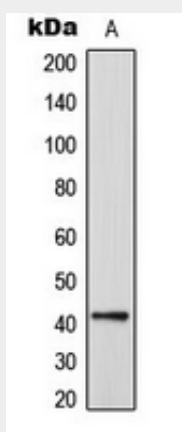
[Isoform 1]: Expressed in testis and fetal tissues.

### Anti-CEP41 Antibody - Protocols

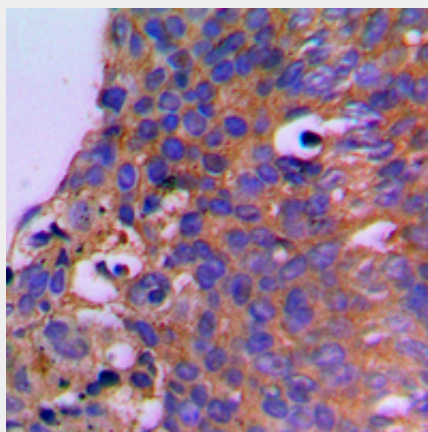
Provided below are standard protocols that you may find useful for product applications.

- [Western Blot](#)
- [Blocking Peptides](#)
- [Dot Blot](#)
- [Immunohistochemistry](#)
- [Immunofluorescence](#)
- [Immunoprecipitation](#)
- [Flow Cytometry](#)
- [Cell Culture](#)

### Anti-CEP41 Antibody - Images



Western blot analysis of CEP41 expression in HeLa (A) whole cell lysates.



Immunohistochemical analysis of CEP41 staining in human breast cancer formalin fixed paraffin embedded tissue section. The section was pre-treated using heat mediated antigen retrieval with sodium citrate buffer (pH 6.0). The section was then incubated with the antibody at room temperature and detected using an HRP conjugated compact polymer system. DAB was used as the chromogen. The section was then counterstained with haematoxylin and mounted with DPX.

### Anti-CEP41 Antibody - Background

Rabbit polyclonal antibody to CEP41