

Anti-A-MYB Antibody
Catalog # AP53778**Specification****Anti-A-MYB Antibody - Product Information**

Application	WB
Primary Accession	P10243
Reactivity	Human, Mouse, Rat
Host	Rabbit
Clonality	Polyclonal
Calculated MW	85887

Anti-A-MYB Antibody - Additional Information**Gene ID** 4603**Other Names**

AMYB; Myb-related protein A; A-Myb; Myb-like protein 1

Target/Specificity

Recognizes endogenous levels of A-MYB protein.

Dilution

WB~~1/500 - 1/1000

Format

Liquid in 0.42% Potassium phosphate, 0.87% Sodium chloride, pH 7.3, 30% glycerol, and 0.09% (W/V) sodium azide.

Storage

Store at -20 °C. Stable for 12 months from date of receipt

Anti-A-MYB Antibody - Protein Information**Name** MYBL1**Synonyms** AMYB**Function**

Transcription factor that specifically recognizes the sequence 5'-YAAC[GT]G-3' (PubMed: [7987850](http://www.uniprot.org/citations/7987850), PubMed: [8058310](http://www.uniprot.org/citations/8058310)). Acts as a master regulator of male meiosis by promoting expression of piRNAs: activates expression of both piRNA precursor RNAs and expression of protein-coding genes involved in piRNA metabolism (By similarity). The piRNA metabolic process mediates the repression of transposable elements during meiosis by forming complexes composed of piRNAs and Piwi proteins and governs the methylation and subsequent repression of transposons, which is essential for the germline integrity (By similarity). Transcriptional activator of SOX30 (By similarity).

Cellular Location

Nucleus {ECO:0000250|UniProtKB:P51960}.

Tissue Location

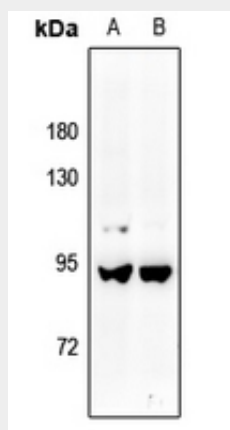
Expressed in a variety of lymphoid and solid tumor lines cultured in vitro

Anti-A-MYB Antibody - Protocols

Provided below are standard protocols that you may find useful for product applications.

- [Western Blot](#)
- [Blocking Peptides](#)
- [Dot Blot](#)
- [Immunohistochemistry](#)
- [Immunofluorescence](#)
- [Immunoprecipitation](#)
- [Flow Cytometry](#)
- [Cell Culture](#)

Anti-A-MYB Antibody - Images



Western blot analysis of A-MYB expression in mouse brain (A), rat brain (B) whole cell lysates.

Anti-A-MYB Antibody - Background

Rabbit polyclonal antibody to A-MYB