

**Anti-BRI3 Antibody**  
Catalog # AP53769

**Specification**

---

**Anti-BRI3 Antibody - Product Information**

Application	WB
Primary Accession	<a href="#">O95415</a>
Reactivity	Human, Mouse, Rat
Host	Rabbit
Clonality	Polyclonal
Calculated MW	13645

**Anti-BRI3 Antibody - Additional Information**

**Gene ID** 25798

**Other Names**

Brain protein I3; pRGR2

**Target/Specificity**

Recognizes endogenous levels of BRI3 protein.

**Dilution**

WB~~1/500 - 1/1000

**Format**

Liquid in 0.42% Potassium phosphate, 0.87% Sodium chloride, pH 7.3, 30% glycerol, and 0.09% (W/V) sodium azide.

**Storage**

Store at -20 °C. Stable for 12 months from date of receipt

**Anti-BRI3 Antibody - Protein Information**

**Name** BRI3

**Function**

Participates in tumor necrosis factor-alpha (TNF)-induced cell death (PubMed:<a href="http://www.uniprot.org/citations/14592447" target="\_blank">14592447</a>). May be a target of Wnt/beta-catenin signaling in the liver (PubMed:<a href="http://www.uniprot.org/citations/20538055" target="\_blank">20538055</a>).

**Cellular Location**

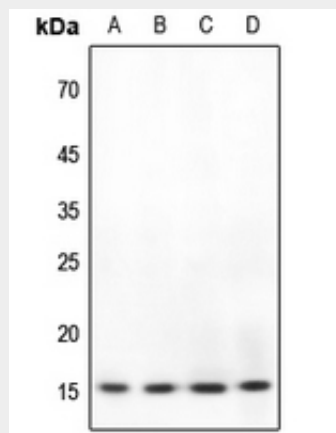
Lysosome membrane; Multi-pass membrane protein [Isoform 2]: Cytoplasm. Nucleus Note=Diffuse localization in the cytoplasm and nucleus

## Anti-BRI3 Antibody - Protocols

Provided below are standard protocols that you may find useful for product applications.

- [Western Blot](#)
- [Blocking Peptides](#)
- [Dot Blot](#)
- [Immunohistochemistry](#)
- [Immunofluorescence](#)
- [Immunoprecipitation](#)
- [Flow Cytometry](#)
- [Cell Culture](#)

## Anti-BRI3 Antibody - Images



Western blot analysis of BRI3 expression in HEK293T (A), HeLa (B), H446 (C), rat kidney (D) whole cell lysates.

## Anti-BRI3 Antibody - Background

Rabbit polyclonal antibody to BRI3