

Anti-GPR182 Antibody
Catalog # AP53768**Specification**

Anti-GPR182 Antibody - Product Information

Application	WB
Primary Accession	O15218
Reactivity	Human, Mouse, Rat
Host	Rabbit
Clonality	Polyclonal
Calculated MW	45323

Anti-GPR182 Antibody - Additional Information**Gene ID** 11318**Other Names**

ADMR; G-protein coupled receptor 182

Target/Specificity

Recognizes endogenous levels of GPR182 protein.

Dilution

WB~~1/500 - 1/1000

Format

Liquid in 0.42% Potassium phosphate, 0.87% Sodium chloride, pH 7.3, 30% glycerol, and 0.09% (W/V) sodium azide.

Storage

Store at -20 °C. Stable for 12 months from date of receipt

Anti-GPR182 Antibody - Protein Information**Name** GPR182**Synonyms** ADMR**Function**

Orphan receptor.

Cellular Location

Cell membrane; Multi-pass membrane protein.

Tissue Location

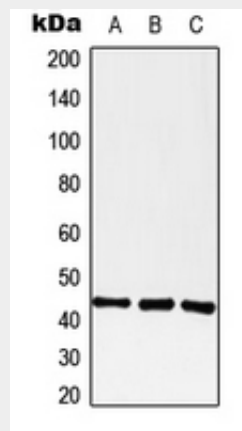
Highly expressed in heart, skeletal muscle, immune system, adrenal gland and liver.

Anti-GPR182 Antibody - Protocols

Provided below are standard protocols that you may find useful for product applications.

- [Western Blot](#)
- [Blocking Peptides](#)
- [Dot Blot](#)
- [Immunohistochemistry](#)
- [Immunofluorescence](#)
- [Immunoprecipitation](#)
- [Flow Cytometry](#)
- [Cell Culture](#)

Anti-GPR182 Antibody - Images



Western blot analysis of GPR182 expression in A549 (A), Raw264.7 (B), PC12 (C) whole cell lysates.

Anti-GPR182 Antibody - Background

Rabbit polyclonal antibody to GPR182