

**Anti-CREG1 Antibody**  
Catalog # AP53764**Specification**

---

**Anti-CREG1 Antibody - Product Information**

Application	WB
Primary Accession	<a href="#">O75629</a>
Reactivity	Human, Mouse, Rat
Host	Rabbit
Clonality	Polyclonal
Calculated MW	24075

**Anti-CREG1 Antibody - Additional Information****Gene ID** 8804**Other Names**

CREG; Protein CREG1; Cellular repressor of E1A-stimulated genes 1

**Target/Specificity**

Recognizes endogenous levels of CREG1 protein.

**Dilution**

WB~~1/500 - 1/1000

**Format**

Liquid in 0.42% Potassium phosphate, 0.87% Sodium chloride, pH 7.3, 30% glycerol, and 0.09% (W/V) sodium azide.

**Storage**

Store at -20 °C. Stable for 12 months from date of receipt

**Anti-CREG1 Antibody - Protein Information****Name** CREG1**Synonyms** CREG**Function**

May contribute to the transcriptional control of cell growth and differentiation. Antagonizes transcriptional activation and cellular transformation by the adenovirus E1A protein. The transcriptional control activity of cell growth requires interaction with IGF2R.

**Cellular Location**

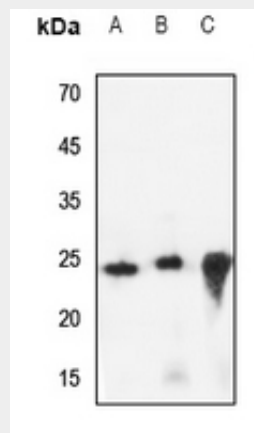
Secreted.

## Anti-CREG1 Antibody - Protocols

Provided below are standard protocols that you may find useful for product applications.

- [Western Blot](#)
- [Blocking Peptides](#)
- [Dot Blot](#)
- [Immunohistochemistry](#)
- [Immunofluorescence](#)
- [Immunoprecipitation](#)
- [Flow Cytometry](#)
- [Cell Culture](#)

## Anti-CREG1 Antibody - Images



Western blot analysis of CREG1 expression in HEK293T (A), HeLa (B), mouse spleen (C) whole cell lysates.

## Anti-CREG1 Antibody - Background

Rabbit polyclonal antibody to CREG1