

Anti-PLSCR1 Antibody
Catalog # AP53763**Specification****Anti-PLSCR1 Antibody - Product Information**

Application	WB
Primary Accession	O15162
Reactivity	Human, Mouse, Rat
Host	Rabbit
Clonality	Polyclonal
Calculated MW	35049

Anti-PLSCR1 Antibody - Additional Information

Gene ID 5359

Other Names

Phospholipid scramblase 1; PL scramblase 1; Ca(2+)-dependent phospholipid scramblase 1; Erythrocyte phospholipid scramblase; MmTRA1b

Target/Specificity

Recognizes endogenous levels of PLSCR1 protein.

Dilution

WB~~1/500 - 1/1000

Format

Liquid in 0.42% Potassium phosphate, 0.87% Sodium chloride, pH 7.3, 30% glycerol, and 0.09% (W/V) sodium azide.

Storage

Store at -20 °C. Stable for 12 months from date of receipt

Anti-PLSCR1 Antibody - Protein Information

Name PLSCR1

Function

Catalyzes calcium-induced ATP-independent rapid bidirectional and non-specific movement of phospholipids (lipid scrambling or lipid flip-flop) between the inner and outer leaflet of the plasma membrane resulting in collapse of the phospholipid asymmetry which leads to phosphatidylserine externalization on the cell surface (PubMed: [10770950](http://www.uniprot.org/citations/10770950) target="_blank">10770950, PubMed: [18629440](http://www.uniprot.org/citations/18629440) target="_blank">18629440, PubMed: [23590222](http://www.uniprot.org/citations/23590222) target="_blank">23590222, PubMed: [23659204](http://www.uniprot.org/citations/23659204) target="_blank">23659204, PubMed: [24343571](http://www.uniprot.org/citations/24343571) target="_blank">24343571, PubMed: [24648509](http://www.uniprot.org/citations/24648509) target="_blank">24648509, PubMed: [29748552](http://www.uniprot.org/citations/29748552) target="_blank">29748552)

target="_blank">29748552, PubMed:32110987, PubMed:8663431, PubMed:9218461, PubMed:9485382, PubMed:9572851). Mediates calcium-dependent phosphatidylserine externalization and apoptosis in neurons via its association with TRPC5 (By similarity). Also exhibits magnesium-dependent nuclease activity against double-stranded DNA and RNA but not single-stranded DNA and can enhance DNA decatenation mediated by TOP2A (PubMed:17567603, PubMed:27206388). Negatively regulates FcR-mediated phagocytosis in differentiated macrophages (PubMed:26745724). May contribute to cytokine-regulated cell proliferation and differentiation (By similarity). May play a role in the antiviral response of interferon (IFN) by amplifying and enhancing the IFN response through increased expression of select subset of potent antiviral genes (PubMed:15308695). Inhibits the functions of viral transactivators, including human T-cell leukemia virus (HTLV)-1 protein Tax, human immunodeficiency virus (HIV)-1 Tat, human hepatitis B virus (HBV) HBx, Epstein-Barr virus (EBV) BZLF1 and human cytomegalovirus IE1 and IE2 proteins through direct interactions (PubMed:22789739, PubMed:23501106, PubMed:25365352, PubMed:31434743, PubMed:35138119). Mediates also the inhibition of influenza virus infection by preventing nuclear import of the viral nucleoprotein/NP (PubMed:29352288, PubMed:35595813). Plays a crucial role as a defense factor against SARS-CoV-2 independently of its scramblase activity by directly targeting nascent viral vesicles to prevent virus-membrane fusion and the release of viral RNA into the host-cell cytosol (PubMed:37438530).

Cellular Location

Cell membrane; Single-pass type II membrane protein. Cell membrane; Lipid-anchor; Cytoplasmic side. Nucleus. Cytoplasm. Cytoplasm, perinuclear region Note=Localizes to the perinuclear region in the presence of RELT (PubMed:22052202). Palmitoylation regulates its localization to the cell membrane or the nucleus; trafficking to the cell membrane is dependent upon palmitoylation whereas in the absence of palmitoylation, localizes to the nucleus (PubMed:12564925)

Tissue Location

Expressed in platelets, erythrocyte membranes, lymphocytes, spleen, thymus, prostate, testis, uterus, intestine, colon, heart, placenta, lung, liver, kidney and pancreas. Not detected in brain and skeletal muscle.

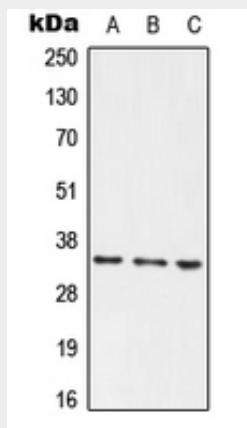
Anti-PLSCR1 Antibody - Protocols

Provided below are standard protocols that you may find useful for product applications.

- [Western Blot](#)
- [Blocking Peptides](#)
- [Dot Blot](#)
- [Immunohistochemistry](#)
- [Immunofluorescence](#)
- [Immunoprecipitation](#)

- [Flow Cytometry](#)
- [Cell Culture](#)

Anti-PLSCR1 Antibody - Images



Western blot analysis of PLSCR1 expression in HEK293T (A), Raw264.7 (B), PC12 (C) whole cell lysates.

Anti-PLSCR1 Antibody - Background

Rabbit polyclonal antibody to PLSCR1