

Anti-p22 phox Antibody
Catalog # AP53757**Specification****Anti-p22 phox Antibody - Product Information**

Application	WB
Primary Accession	P13498
Reactivity	Human, Mouse, Rat
Host	Rabbit
Clonality	Polyclonal
Calculated MW	21013

Anti-p22 phox Antibody - Additional Information**Gene ID** 1535**Other Names**

Cytochrome b-245 light chain; Cytochrome b(558) alpha chain; Cytochrome b558 subunit alpha; Neutrophil cytochrome b 22 kDa polypeptide; Superoxide-generating NADPH oxidase light chain subunit; p22 phagocyte B-cytochrome; p22-phox; p22phox

Target/Specificity

Recognizes endogenous levels of p22 phox protein.

Dilution

WB~~1/500 - 1/1000

Format

Liquid in 0.42% Potassium phosphate, 0.87% Sodium chloride, pH 7.3, 30% glycerol, and 0.09% (W/V) sodium azide.

Storage

Store at -20 °C. Stable for 12 months from date of receipt

Anti-p22 phox Antibody - Protein Information**Name** CYBA ([HGNC:2577](#))**Function**

Critical component of the membrane-bound oxidase of phagocytes that generates superoxide. Associates with NOX3 to form a functional NADPH oxidase constitutively generating superoxide.

Cellular Location

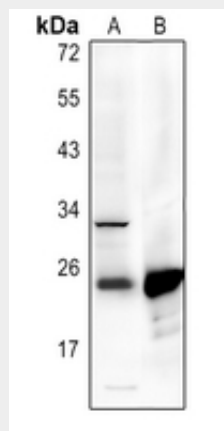
Cell membrane. Note=As unassembled monomer may localize to the endoplasmic reticulum {ECO:0000250|UniProtKB:Q61462}

Anti-p22 phox Antibody - Protocols

Provided below are standard protocols that you may find useful for product applications.

- [Western Blot](#)
- [Blocking Peptides](#)
- [Dot Blot](#)
- [Immunohistochemistry](#)
- [Immunofluorescence](#)
- [Immunoprecipitation](#)
- [Flow Cytometry](#)
- [Cell Culture](#)

Anti-p22 phox Antibody - Images



Western blot analysis of p22 phox expression in HEK293T (A), mouse spleen (B) whole cell lysates.

Anti-p22 phox Antibody - Background

Rabbit polyclonal antibody to p22 phox