

**Anti-Alpha-tubulin 3C/D/E Antibody**  
Catalog # AP53748**Specification**

---

**Anti-Alpha-tubulin 3C/D/E Antibody - Product Information**

Application	<b>WB</b>
Primary Accession	<a href="#">Q13748</a>
Other Accession	<a href="#">Q6PEY2</a>
Reactivity	<b>Human, Mouse, Rat</b>
Host	<b>Rabbit</b>
Clonality	<b>Polyclonal</b>

**Anti-Alpha-tubulin 3C/D/E Antibody - Additional Information****Other Names**

TUBA3C; TUBA2; TUBA3D; Tubulin alpha-3C/D chain; Alpha-tubulin 2; Alpha-tubulin 3C/D; Tubulin alpha-2 chain; TUBA3E; Tubulin alpha-3E chain; Alpha-tubulin 3E

**Target/Specificity**

Recognizes endogenous levels of Alpha-tubulin 3C/D/E protein.

**Dilution**

WB~~1/500 - 1/1000

**Format**

Liquid in 0.42% Potassium phosphate, 0.87% Sodium chloride, pH 7.3, 30% glycerol, and 0.09% (W/V) sodium azide.

**Storage**

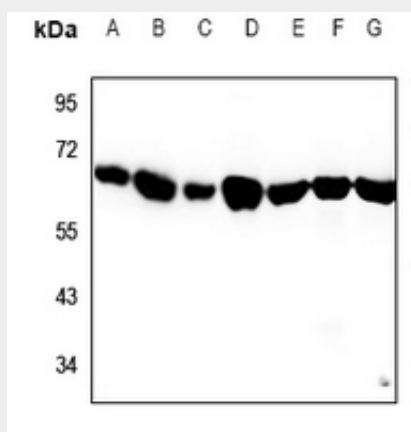
Store at -20 °C. Stable for 12 months from date of receipt

**Anti-Alpha-tubulin 3C/D/E Antibody - Protein Information****Anti-Alpha-tubulin 3C/D/E Antibody - Protocols**

Provided below are standard protocols that you may find useful for product applications.

- [Western Blot](#)
- [Blocking Peptides](#)
- [Dot Blot](#)
- [Immunohistochemistry](#)
- [Immunofluorescence](#)
- [Immunoprecipitation](#)
- [Flow Cytometry](#)
- [Cell Culture](#)

**Anti-Alpha-tubulin 3C/D/E Antibody - Images**



Western blot analysis of Alpha-tubulin 3C/D/E expression in rat brain (A), mouse brain (B), THP1 (C), K562 (D), Hela (E), rat testis (F), mouse testis (G) whole cell lysates.

#### **Anti-Alpha-tubulin 3C/D/E Antibody - Background**

Rabbit polyclonal antibody to Alpha-tubulin 3C/D/E