

Anti-ETAA1 Antibody
Catalog # AP53736**Specification****Anti-ETAA1 Antibody - Product Information**

Application	WB
Primary Accession	Q9NY74
Reactivity	Human, Rat
Host	Rabbit
Clonality	Polyclonal
Calculated MW	103440

Anti-ETAA1 Antibody - Additional Information**Gene ID** 54465**Other Names**

ETAA16; Ewing's tumor-associated antigen 1; Ewing's tumor-associated antigen 16

Target/Specificity

Recognizes endogenous levels of ETAA1 protein.

Dilution

WB~~1/500 - 1/1000

Format

Liquid in 0.42% Potassium phosphate, 0.87% Sodium chloride, pH 7.3, 30% glycerol, and 0.09% (W/V) sodium azide.

Storage

Store at -20 °C. Stable for 12 months from date of receipt

Anti-ETAA1 Antibody - Protein Information**Name** ETAA1 ([HGNC:24648](#))**Function**

Replication stress response protein that accumulates at DNA damage sites and promotes replication fork progression and integrity (PubMed: [27601467](http://www.uniprot.org/citations/27601467), PubMed: [27723717](http://www.uniprot.org/citations/27723717), PubMed: [27723720](http://www.uniprot.org/citations/27723720)). Recruited to stalled replication forks via interaction with the RPA complex and directly stimulates ATR kinase activity independently of TOPBP1 (PubMed: [27723717](http://www.uniprot.org/citations/27723717), PubMed: [27723720](http://www.uniprot.org/citations/27723720), PubMed: [30139873](http://www.uniprot.org/citations/30139873)). Probably only regulates a subset of ATR targets (PubMed: [27723717](http://www.uniprot.org/citations/27723717), PubMed: [27723717](http://www.uniprot.org/citations/27723717), PubMed: [27723717](http://www.uniprot.org/citations/27723717)).

<http://www.uniprot.org/citations/27723720>

Cellular Location

Nucleus Note=Localizes at sites of DNA damage following replication stress (PubMed:27601467, PubMed:27723717, PubMed:27723720). Recruited to stalled replication forks via interaction with RPA1 and RPA2 subunits of the RPA complex (PubMed:27601467, PubMed:27723720)

Tissue Location

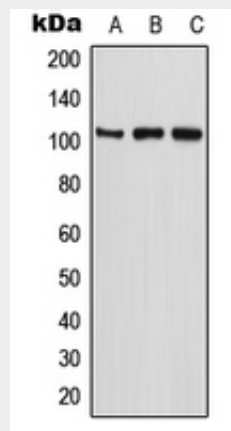
Expressed at high levels in the brain, liver kidney and Ewing tumor cell lines.

Anti-ETAA1 Antibody - Protocols

Provided below are standard protocols that you may find useful for product applications.

- [Western Blot](#)
- [Blocking Peptides](#)
- [Dot Blot](#)
- [Immunohistochemistry](#)
- [Immunofluorescence](#)
- [Immunoprecipitation](#)
- [Flow Cytometry](#)
- [Cell Culture](#)

Anti-ETAA1 Antibody - Images



Western blot analysis of ETAA1 expression in U2OS (A), MCF7 (B), PC12 (C) whole cell lysates.

Anti-ETAA1 Antibody - Background

Rabbit polyclonal antibody to ETAA1