

**Anti-CLIP4 Antibody**  
Catalog # AP53735**Specification**

---

**Anti-CLIP4 Antibody - Product Information**

Application	WB
Primary Accession	<a href="#">P57075</a>
Reactivity	Human, Mouse, Rat
Host	Rabbit
Clonality	Polyclonal
Calculated MW	74123

**Anti-CLIP4 Antibody - Additional Information****Gene ID** 53347**Other Names**

STS2; Ubiquitin-associated and SH3 domain-containing protein A; Cbl-interacting protein 4; CLIP4; Suppressor of T-cell receptor signaling 2; STS-2; T-cell ubiquitin ligand 1; TULA-1

**Target/Specificity**

Recognizes endogenous levels of CLIP4 protein.

**Dilution**

WB~~1/500 - 1/1000

**Format**

Liquid in 0.42% Potassium phosphate, 0.87% Sodium chloride, pH 7.3, 30% glycerol, and 0.09% (W/V) sodium azide.

**Storage**

Store at -20 °C. Stable for 12 months from date of receipt

**Anti-CLIP4 Antibody - Protein Information****Name** UBASH3A**Synonyms** STS2**Function**

Interferes with CBL-mediated down-regulation and degradation of receptor-type tyrosine kinases. Promotes accumulation of activated target receptors, such as T-cell receptors, EGFR and PDGFRB, on the cell surface. Exhibits negligible protein tyrosine phosphatase activity at neutral pH. May act as a dominant-negative regulator of UBASH3B- dependent dephosphorylation. May inhibit dynamin-dependent endocytic pathways by functionally sequestering dynamin via its SH3 domain.

**Cellular Location**

Cytoplasm. Nucleus.

### Tissue Location

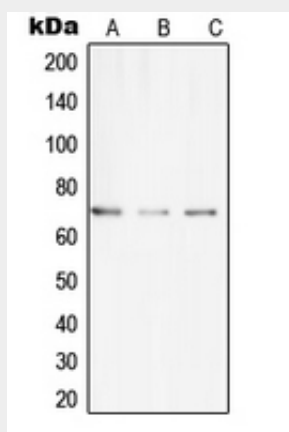
Highest expression of UBASH3A in tissues belonging to the immune system, including spleen, peripheral blood leukocytes, thymus and bone marrow.

### Anti-CLIP4 Antibody - Protocols

Provided below are standard protocols that you may find useful for product applications.

- [Western Blot](#)
- [Blocking Peptides](#)
- [Dot Blot](#)
- [Immunohistochemistry](#)
- [Immunofluorescence](#)
- [Immunoprecipitation](#)
- [Flow Cytometry](#)
- [Cell Culture](#)

### Anti-CLIP4 Antibody - Images



Western blot analysis of CLIP4 expression in THP1 (A), SP2/O (B), H9C2 (C) whole cell lysates.

### Anti-CLIP4 Antibody - Background

Rabbit polyclonal antibody to CLIP4