

Anti-Kalirin Antibody
Catalog # AP53717**Specification**

Anti-Kalirin Antibody - Product Information

Application	WB, IF
Primary Accession	O60229
Reactivity	Human, Mouse, Rat
Host	Rabbit
Clonality	Polyclonal
Calculated MW	340261

Anti-Kalirin Antibody - Additional Information**Gene ID** 8997**Other Names**

DUET; DUO; HAPIP; TRAD; Kalirin; Huntingtin-associated protein-interacting protein; Protein Duo; Serine/threonine-protein kinase with Dbl- and pleckstrin homology domain

Target/Specificity

Recognizes endogenous levels of Kalirin protein.

Dilution

WB~~1/500 - 1/1000

IF~~1/50 - 1/200

Format

Liquid in 0.42% Potassium phosphate, 0.87% Sodium chloride, pH 7.3, 30% glycerol, and 0.09% (W/V) sodium azide.

Storage

Store at -20 °C. Stable for 12 months from date of receipt

Anti-Kalirin Antibody - Protein Information**Name** KALRN ([HGNC:4814](#))**Synonyms** DUET, DUO, HAPIP, TRAD**Function**

Promotes the exchange of GDP by GTP. Activates specific Rho GTPase family members, thereby inducing various signaling mechanisms that regulate neuronal shape, growth, and plasticity, through their effects on the actin cytoskeleton. Induces lamellipodia independent of its GEF activity.

Cellular Location

Cytoplasm. Cytoplasm, cytoskeleton. Note=Associated with the cytoskeleton

Tissue Location

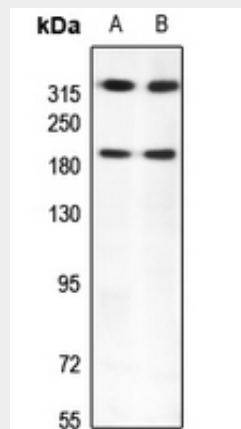
Isoform 2 is brain specific. Highly expressed in cerebral cortex, putamen, amygdala, hippocampus and caudate nucleus Weakly expressed in brain stem and cerebellum. Isoform 4 is expressed in skeletal muscle.

Anti-Kalirin Antibody - Protocols

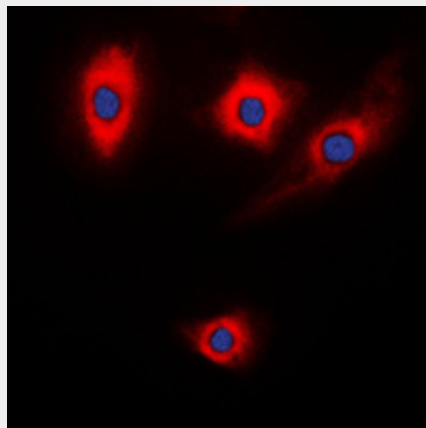
Provided below are standard protocols that you may find useful for product applications.

- [Western Blot](#)
- [Blocking Peptides](#)
- [Dot Blot](#)
- [Immunohistochemistry](#)
- [Immunofluorescence](#)
- [Immunoprecipitation](#)
- [Flow Cytometry](#)
- [Cell Culture](#)

Anti-Kalirin Antibody - Images



Western blot analysis of Kalirin expression in HeLa (A), H446 (B) whole cell lysates.



Immunofluorescent analysis of Kalirin staining in NIH3T3 cells. Formalin-fixed cells were permeabilized with 0.1% Triton X-100 in TBS for 5-10 minutes and blocked with 3% BSA-PBS for 30 minutes at room temperature. Cells were probed with the primary antibody in 3% BSA-PBS and incubated overnight at 4 °C in a humidified chamber. Cells were washed with PBST and incubated

with a DyLight 594-conjugated secondary antibody (red) in PBS at room temperature in the dark. DAPI was used to stain the cell nuclei (blue).

Anti-Kalirin Antibody - Background

Rabbit polyclonal antibody to Kalirin