

Anti-ADAM23 Antibody
Catalog # AP53714**Specification**

Anti-ADAM23 Antibody - Product Information

Application	WB
Primary Accession	O75077
Reactivity	Human, Mouse
Host	Rabbit
Clonality	Polyclonal
Calculated MW	91926

Anti-ADAM23 Antibody - Additional Information**Gene ID** 8745**Other Names**

MDC3; Disintegrin and metalloproteinase domain-containing protein 23; ADAM 23; Metalloproteinase-like, disintegrin-like, and cysteine-rich protein 3; MDC-3

Target/Specificity

Recognizes endogenous levels of ADAM23 protein.

Dilution

WB~~1/500 - 1/1000

Format

Liquid in 0.42% Potassium phosphate, 0.87% Sodium chloride, pH 7.3, 30% glycerol, and 0.09% (W/V) sodium azide.

Storage

Store at -20 °C. Stable for 12 months from date of receipt

Anti-ADAM23 Antibody - Protein Information**Name** ADAM23**Synonyms** MDC3**Function**

May play a role in cell-cell and cell-matrix interactions. This is a non-catalytic metalloprotease-like protein.

Cellular Location

Cell membrane; Single-pass type I membrane protein

Tissue Location

Highly expressed in the brain and weakly expressed in the heart. In the brain, expressed

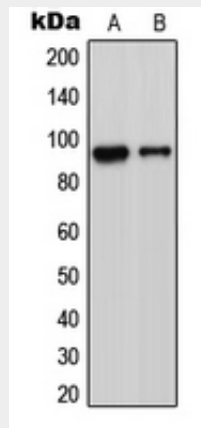
prominently in the amygdala, caudate nucleus, hypothalamus, thalamus, cerebral cortex and occipital pole.

Anti-ADAM23 Antibody - Protocols

Provided below are standard protocols that you may find useful for product applications.

- [Western Blot](#)
- [Blocking Peptides](#)
- [Dot Blot](#)
- [Immunohistochemistry](#)
- [Immunofluorescence](#)
- [Immunoprecipitation](#)
- [Flow Cytometry](#)
- [Cell Culture](#)

Anti-ADAM23 Antibody - Images



Western blot analysis of ADAM23 expression in Jurkat (A), MCF7 (B), Raw264.7 (C) whole cell lysates.

Anti-ADAM23 Antibody - Background

Rabbit polyclonal antibody to ADAM23