

Anti-RAIDD Antibody
Catalog # AP53713**Specification****Anti-RAIDD Antibody - Product Information**

Application	WB
Primary Accession	P78560
Reactivity	Human, Mouse, Rat
Host	Rabbit
Clonality	Polyclonal
Calculated MW	22745

Anti-RAIDD Antibody - Additional Information**Gene ID** 8738**Other Names**

RAIDD; Death domain-containing protein CRADD; Caspase and RIP adapter with death domain; RIP-associated protein with a death domain

Target/Specificity

Recognizes endogenous levels of RAIDD protein.

Dilution

WB~~1/500 - 1/1000

Format

Liquid in 0.42% Potassium phosphate, 0.87% Sodium chloride, pH 7.3, 30% glycerol, and 0.09% (W/V) sodium azide.

Storage

Store at -20 °C. Stable for 12 months from date of receipt

Anti-RAIDD Antibody - Protein Information**Name** CRADD**Synonyms** RAIDD**Function**

Adapter protein that associates with PIDD1 and the caspase CASP2 to form the PIDDosome, a complex that activates CASP2 and triggers apoptosis (PubMed: [15073321](http://www.uniprot.org/citations/15073321), PubMed: [16652156](http://www.uniprot.org/citations/16652156), PubMed: [17159900](http://www.uniprot.org/citations/17159900), PubMed: [17289572](http://www.uniprot.org/citations/17289572), PubMed: [9044836](http://www.uniprot.org/citations/9044836)). Also recruits CASP2 to the TNFR-1 signaling complex through its interaction with RIPK1 and TRADD and may

play a role in the tumor necrosis factor-mediated signaling pathway (PubMed:8985253).

Cellular Location

Cytoplasm {ECO:0000250|UniProtKB:O88843}. Nucleus {ECO:0000250|UniProtKB:O88843}

Tissue Location

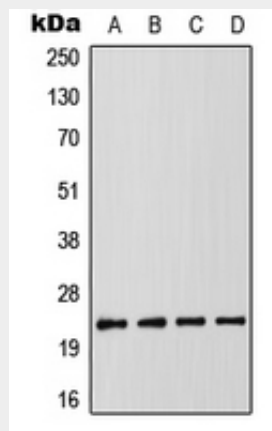
Constitutively expressed in most tissues, with particularly high expression in adult heart, testis, liver, skeletal muscle, fetal liver and kidney.

Anti-RAIDD Antibody - Protocols

Provided below are standard protocols that you may find useful for product applications.

- [Western Blot](#)
- [Blocking Peptides](#)
- [Dot Blot](#)
- [Immunohistochemistry](#)
- [Immunofluorescence](#)
- [Immunoprecipitation](#)
- [Flow Cytometry](#)
- [Cell Culture](#)

Anti-RAIDD Antibody - Images



Western blot analysis of RAIDD expression in MCF7 (A), K562 (B), SP2/0 (C), PC12 (D) whole cell lysates.

Anti-RAIDD Antibody - Background

Rabbit polyclonal antibody to RAIDD