

**Anti-SLC25A11 Antibody**  
Catalog # AP53711**Specification**

---

**Anti-SLC25A11 Antibody - Product Information**

Application	<b>WB</b>
Primary Accession	<a href="#">Q02978</a>
Reactivity	<b>Human, Mouse, Rat</b>
Host	<b>Rabbit</b>
Clonality	<b>Polyclonal</b>
Calculated MW	<b>34062</b>

**Anti-SLC25A11 Antibody - Additional Information****Gene ID** 8402**Other Names**

SLC20A4; Mitochondrial 2-oxoglutarate/malate carrier protein; OGCP; Solute carrier family 25 member 11

**Target/Specificity**

Recognizes endogenous levels of SLC25A11 protein.

**Dilution**

WB~~1/500 - 1/1000

**Format**

Liquid in 0.42% Potassium phosphate, 0.87% Sodium chloride, pH 7.3, 30% glycerol, and 0.09% (W/V) sodium azide.

**Storage**

Store at -20 °C. Stable for 12 months from date of receipt

**Anti-SLC25A11 Antibody - Protein Information****Name** SLC25A11**Synonyms** SLC20A4**Function**

Catalyzes the transport of 2-oxoglutarate (alpha- oxoglutarate) across the inner mitochondrial membrane in an electroneutral exchange for malate. Can also exchange 2-oxoglutarate for other dicarboxylic acids such as malonate, succinate, maleate and oxaloacetate, although with lower affinity. Contributes to several metabolic processes, including the malate-aspartate shuttle, the oxoglutarate/isocitrate shuttle, in gluconeogenesis from lactate, and in nitrogen metabolism (By similarity). Maintains mitochondrial fusion and fission events, and the organization and morphology of cristae (PubMed:<a href="http://www.uniprot.org/citations/21448454" target="\_blank">21448454</a>). Involved in the regulation of apoptosis (By similarity). Helps

protect from cytotoxic-induced apoptosis by modulating glutathione levels in mitochondria (By similarity).

#### Cellular Location

Mitochondrion inner membrane {ECO:0000250|UniProtKB:P97700}; Multi-pass membrane protein {ECO:0000250|UniProtKB:P97700}

#### Tissue Location

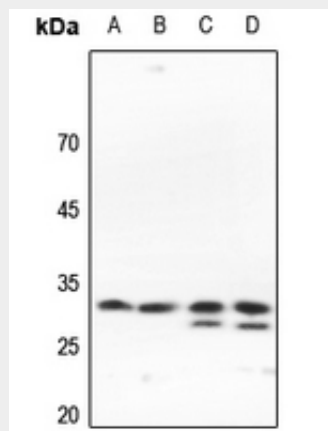
Most highly expressed in the heart.

### Anti-SLC25A11 Antibody - Protocols

Provided below are standard protocols that you may find useful for product applications.

- [Western Blot](#)
- [Blocking Peptides](#)
- [Dot Blot](#)
- [Immunohistochemistry](#)
- [Immunofluorescence](#)
- [Immunoprecipitation](#)
- [Flow Cytometry](#)
- [Cell Culture](#)

### Anti-SLC25A11 Antibody - Images



Western blot analysis of SLC25A11 expression in HEK293T (A), HeLa (B), rat kidney (C), rat spleen (D) whole cell lysates.

### Anti-SLC25A11 Antibody - Background

Rabbit polyclonal antibody to SLC25A11