

Anti-MAGEA3/6 Antibody
Catalog # AP53687

Specification

Anti-MAGEA3/6 Antibody - Product Information

Application	WB
Primary Accession	P43360
Reactivity	Human, Mouse, Rat
Host	Rabbit
Clonality	Polyclonal
Calculated MW	34891

Anti-MAGEA3/6 Antibody - Additional Information

Gene ID 4105

Other Names

MAGE6; Melanoma-associated antigen 6; Cancer/testis antigen 1.6; CT1.6; MAGE-6 antigen; MAGE3B antigen

Target/Specificity

Recognizes endogenous levels of MAGEA6 protein.

Dilution

WB~~1/500 - 1/1000

Format

Liquid in 0.42% Potassium phosphate, 0.87% Sodium chloride, pH 7.3, 30% glycerol, and 0.09% (W/V) sodium azide.

Storage

Store at -20 °C. Stable for 12 months from date of receipt

Anti-MAGEA3/6 Antibody - Protein Information

Name MAGEA6 {ECO:0000303|PubMed:31267705, ECO:0000312|HGNC:HGNC:6804}

Function

Activator of ubiquitin ligase activity of RING-type zinc finger-containing E3 ubiquitin-protein ligases that acts as a repressor of autophagy (PubMed: 17942928, PubMed: 20864041, PubMed: 31267705). May enhance ubiquitin ligase activity of TRIM28 and stimulate p53/TP53 ubiquitination by TRIM28. Proposed to act through recruitment and/or stabilization of the Ubl-conjugating enzyme (E2) at the E3:substrate complex (PubMed: 17942928, PubMed: 20864041). May play a role in tumor transformation or aspects of tumor

progression (PubMed:17942928, PubMed:20864041). In vitro promotes cell viability in melanoma cell lines (PubMed:17942928).

Tissue Location

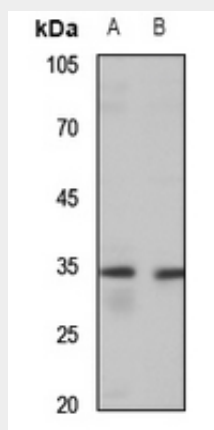
Expressed in many tumors of several types, such as melanoma, head and neck squamous cell carcinoma, lung carcinoma and breast carcinoma, but not in normal tissues except for testes

Anti-MAGEA3/6 Antibody - Protocols

Provided below are standard protocols that you may find useful for product applications.

- [Western Blot](#)
- [Blocking Peptides](#)
- [Dot Blot](#)
- [Immunohistochemistry](#)
- [Immunofluorescence](#)
- [Immunoprecipitation](#)
- [Flow Cytometry](#)
- [Cell Culture](#)

Anti-MAGEA3/6 Antibody - Images



Western blot analysis of MAGEA3/6 expression in mouse muscle (A), rat kidney (B) whole cell lysates.

Anti-MAGEA3/6 Antibody - Background

Rabbit polyclonal antibody to MAGEA6