

Anti-NRAS/HRAS/KRAS Antibody
Catalog # AP53683**Specification**

Anti-NRAS/HRAS/KRAS Antibody - Product Information

Application	WB
Primary Accession	P01111
Other Accession	P01112 , P01116
Reactivity	Human, Mouse, Rat
Host	Rabbit
Clonality	Polyclonal
Calculated MW	21229

Anti-NRAS/HRAS/KRAS Antibody - Additional Information**Gene ID** 4893**Other Names**

NRAS; HRAS1; GTPase NRas; Transforming protein N-Ras; HRAS; HRAS1; GTPase HRas; H-Ras-1; Ha-Ras; Transforming protein p21; c-H-ras; p21ras; KRAS; KRAS2; RASK2; GTPase KRas; K-Ras 2; Ki-Ras; c-K-ras; c-Ki-ras

Target/Specificity

Recognizes endogenous levels of NRAS/HRAS/KRAS protein.

Dilution

WB~~1/500 - 1/1000

Format

Liquid in 0.42% Potassium phosphate, 0.87% Sodium chloride, pH 7.3, 30% glycerol, and 0.09% (W/V) sodium azide.

Storage

Store at -20 °C. Stable for 12 months from date of receipt

Anti-NRAS/HRAS/KRAS Antibody - Protein Information**Name** NRAS**Synonyms** HRAS1**Function**

Ras proteins bind GDP/GTP and possess intrinsic GTPase activity.

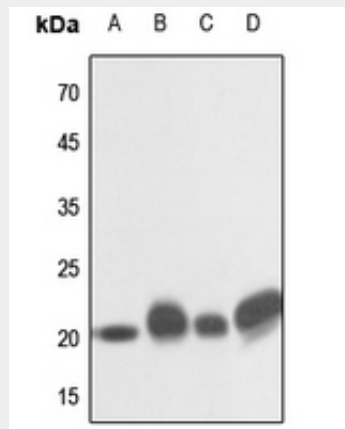
Cellular LocationCell membrane; Lipid-anchor; Cytoplasmic side. Golgi apparatus membrane; Lipid-anchor
Note=Shuttles between the plasma membrane and the Golgi apparatus

Anti-NRAS/HRAS/KRAS Antibody - Protocols

Provided below are standard protocols that you may find useful for product applications.

- [Western Blot](#)
- [Blocking Peptides](#)
- [Dot Blot](#)
- [Immunohistochemistry](#)
- [Immunofluorescence](#)
- [Immunoprecipitation](#)
- [Flow Cytometry](#)
- [Cell Culture](#)

Anti-NRAS/HRAS/KRAS Antibody - Images



Western blot analysis of NRAS/HRAS/KRAS expression in H446 (A), mouse kidney (B), mouse testis (C), rat kidney (D) whole cell lysates.

Anti-NRAS/HRAS/KRAS Antibody - Background

Rabbit polyclonal antibody to NRAS/HRAS/KRAS