

Anti-mGLUR2 Antibody
Catalog # AP53676**Specification**

Anti-mGLUR2 Antibody - Product Information

Application	WB
Primary Accession	Q14416
Other Accession	Q14832
Reactivity	Human, Mouse, Rat
Host	Rabbit
Clonality	Polyclonal
Calculated MW	95568

Anti-mGLUR2 Antibody - Additional Information**Gene ID** 2912**Other Names**

GRM2; GPRC1B; MGLUR2; Metabotropic glutamate receptor 2; mGluR2; GRM3; GPRC1C; MGLUR3; Metabotropic glutamate receptor 3; mGluR3

Target/Specificity

Recognizes endogenous levels of mGLUR2 protein.

Dilution

WB~~1/500 - 1/1000

Format

Liquid in 0.42% Potassium phosphate, 0.87% Sodium chloride, pH 7.3, 30% glycerol, and 0.09% (W/V) sodium azide.

Storage

Store at -20 °C. Stable for 12 months from date of receipt

Anti-mGLUR2 Antibody - Protein Information**Name** GRM2 ([HGNC:4594](#))**Synonyms** GPRC1B, MGLUR2**Function**

G-protein coupled receptor for glutamate. Ligand binding causes a conformation change that triggers signaling via guanine nucleotide-binding proteins (G proteins) and modulates the activity of down-stream effectors, such as adenylate cyclase. Signaling inhibits adenylate cyclase activity. May mediate suppression of neurotransmission or may be involved in synaptogenesis or synaptic stabilization.

Cellular Location

Cell membrane; Multi-pass membrane protein. Synapse. Cell projection, dendrite

Tissue Location

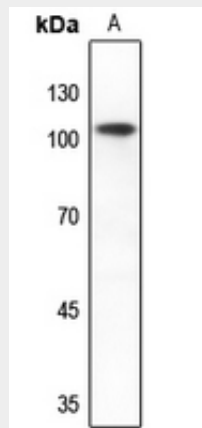
Detected in brain cortex (at protein level). Widely expressed in different regions of the adult brain as well as in fetal brain.

Anti-mGLUR2 Antibody - Protocols

Provided below are standard protocols that you may find useful for product applications.

- [Western Blot](#)
- [Blocking Peptides](#)
- [Dot Blot](#)
- [Immunohistochemistry](#)
- [Immunofluorescence](#)
- [Immunoprecipitation](#)
- [Flow Cytometry](#)
- [Cell Culture](#)

Anti-mGLUR2 Antibody - Images



Western blot analysis of mGLUR2 expression in rat brain (A) whole cell lysates.

Anti-mGLUR2 Antibody - Background

Rabbit polyclonal antibody to mGLUR2