

Anti-FOXM1 Antibody
Catalog # AP53669**Specification****Anti-FOXM1 Antibody - Product Information**

| | |
|-------------------|------------------------|
| Application | WB |
| Primary Accession | Q08050 |
| Reactivity | Human, Mouse, Rat |
| Host | Rabbit |
| Clonality | Polyclonal |
| Calculated MW | 84283 |

Anti-FOXM1 Antibody - Additional Information**Gene ID** 2305**Other Names**

FKHL16; HFH11; MPP2; WIN; Forkhead box protein M1; Forkhead-related protein FKHL16; Hepatocyte nuclear factor 3 forkhead homolog 11; HFH-11; HNF-3/fork-head homolog 11; M-phase phosphoprotein 2; MPM-2 reactive phosphoprotein 2; Transcription factor Trident; Winged-helix factor from INS-1 cells

Target/Specificity

Recognizes endogenous levels of FOXM1 protein.

Dilution

WB~~1/500 - 1/1000

Format

Liquid in 0.42% Potassium phosphate, 0.87% Sodium chloride, pH 7.3, 30% glycerol, and 0.09% (W/V) sodium azide.

Storage

Store at -20 °C. Stable for 12 months from date of receipt

Anti-FOXM1 Antibody - Protein Information**Name** FOXM1**Synonyms** FKHL16, HFH11, MPP2, WIN**Function**

Transcription factor regulating the expression of cell cycle genes essential for DNA replication and mitosis (PubMed: [19160488](http://www.uniprot.org/citations/19160488), PubMed: [20360045](http://www.uniprot.org/citations/20360045)). Plays a role in the control of cell proliferation (PubMed: [19160488](http://www.uniprot.org/citations/19160488)). Also plays a role in DNA break repair, participating in the DNA damage checkpoint response (PubMed: [19160488](http://www.uniprot.org/citations/19160488)).

href="http://www.uniprot.org/citations/17101782" target="_blank">17101782). Promotes transcription of PHB2 (PubMed:33754036).

Cellular Location

Nucleus.

Tissue Location

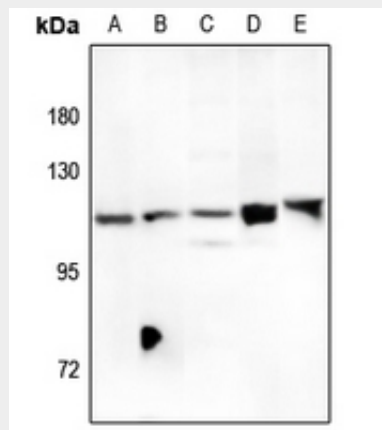
Expressed in thymus, testis, small intestine, colon followed by ovary. Appears to be expressed only in adult organs containing proliferating/cycling cells or in response to growth factors. Also expressed in epithelial cell lines derived from tumors Not expressed in resting cells. Isoform 2 is highly expressed in testis

Anti-FOXM1 Antibody - Protocols

Provided below are standard protocols that you may find useful for product applications.

- [Western Blot](#)
- [Blocking Peptides](#)
- [Dot Blot](#)
- [Immunohistochemistry](#)
- [Immunofluorescence](#)
- [Immunoprecipitation](#)
- [Flow Cytometry](#)
- [Cell Culture](#)

Anti-FOXM1 Antibody - Images



Western blot analysis of FOXM1 expression in mouse testis (A), rat ovary (B), HCT116 (C), H1792 (D), MCF7 (E) whole cell lysates.

Anti-FOXM1 Antibody - Background

Rabbit polyclonal antibody to FOXM1