

Anti-Fibulin 1 Antibody
Catalog # AP53668**Specification**

Anti-Fibulin 1 Antibody - Product Information

Application	WB
Primary Accession	P23142
Reactivity	Human, Mouse, Rat
Host	Rabbit
Clonality	Polyclonal
Calculated MW	77214

Anti-Fibulin 1 Antibody - Additional Information**Gene ID** 2192**Other Names**
Fibulin-1; FIBL-1**Target/Specificity**
Recognizes endogenous levels of Fibulin 1 protein.**Dilution**
WB~~1/500 - 1/1000**Format**
Liquid in 0.42% Potassium phosphate, 0.87% Sodium chloride, pH 7.3, 30% glycerol, and 0.09% (W/V) sodium azide.**Storage**
Store at -20 °C. Stable for 12 months from date of receipt**Anti-Fibulin 1 Antibody - Protein Information****Name** FBLN1**Function**
Incorporated into fibronectin-containing matrix fibers. May play a role in cell adhesion and migration along protein fibers within the extracellular matrix (ECM). Could be important for certain developmental processes and contribute to the supramolecular organization of ECM architecture, in particular to those of basement membranes. Has been implicated in a role in cellular transformation and tumor invasion, it appears to be a tumor suppressor. May play a role in haemostasis and thrombosis owing to its ability to bind fibrinogen and incorporate into clots. Could play a significant role in modulating the neurotrophic activities of APP, particularly soluble APP.**Cellular Location**
Secreted, extracellular space, extracellular matrix

Tissue Location

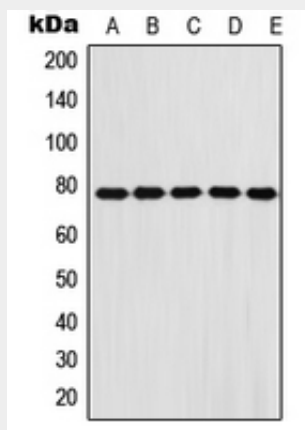
Isoform A and isoform B are only expressed in placenta. Isoform C and isoform D are expressed in a variety of tissues and cultured cells.

Anti-Fibulin 1 Antibody - Protocols

Provided below are standard protocols that you may find useful for product applications.

- [Western Blot](#)
- [Blocking Peptides](#)
- [Dot Blot](#)
- [Immunohistochemistry](#)
- [Immunofluorescence](#)
- [Immunoprecipitation](#)
- [Flow Cytometry](#)
- [Cell Culture](#)

Anti-Fibulin 1 Antibody - Images



Western blot analysis of Fibulin 1 expression in A431 (A), A549 (B), HeLa (C), NIH3T3 (D), H9C2 (E) whole cell lysates.

Anti-Fibulin 1 Antibody - Background

Rabbit polyclonal antibody to Fibulin 1