

Anti-CHRNA7 Antibody
Catalog # AP53661**Specification**

Anti-CHRNA7 Antibody - Product Information

Application	WB
Primary Accession	P36544
Other Accession	Q494W8
Reactivity	Human, Mouse, Rat
Host	Rabbit
Clonality	Polyclonal
Calculated MW	56449

Anti-CHRNA7 Antibody - Additional Information**Gene ID** 1139;89832**Other Names**

CHRNA7; NACHRA7; Neuronal acetylcholine receptor subunit alpha-7; CHRFA7A; CHRNA7-FAM7A fusion protein; CHRNA7-DR1; D-10

Target/Specificity

Recognizes endogenous levels of CHRNA7 protein.

Dilution

WB~~1/500 - 1/1000

Format

Liquid in 0.42% Potassium phosphate, 0.87% Sodium chloride, pH 7.3, 30% glycerol, and 0.09% (W/V) sodium azide.

Storage

Store at -20 °C. Stable for 12 months from date of receipt

Anti-CHRNA7 Antibody - Protein Information**Name** CHRNA7**Synonyms** NACHRA7**Function**

After binding acetylcholine, the AChR responds by an extensive change in conformation that affects all subunits and leads to opening of an ion-conducting channel across the plasma membrane. The channel is blocked by alpha-bungarotoxin.

Cellular Location

Postsynaptic cell membrane; Multi-pass membrane protein. Cell membrane; Multi-pass membrane protein. Note=TMEM35A/NACHO promotes its trafficking to the cell membrane

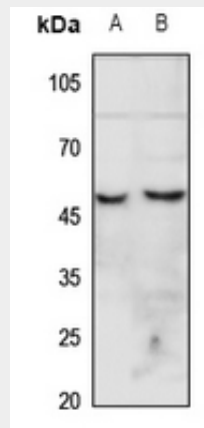
(PubMed:27789755). RIC3 promotes its trafficking to the cell membrane (By similarity)
{ECO:0000250|UniProtKB:Q05941, ECO:0000269|PubMed:27789755}

Anti-CHRNA7 Antibody - Protocols

Provided below are standard protocols that you may find useful for product applications.

- [Western Blot](#)
- [Blocking Peptides](#)
- [Dot Blot](#)
- [Immunohistochemistry](#)
- [Immunofluorescence](#)
- [Immunoprecipitation](#)
- [Flow Cytometry](#)
- [Cell Culture](#)

Anti-CHRNA7 Antibody - Images



Western blot analysis of CHRNA7 expression in mouse liver (A), rat liver (B) whole cell lysates.

Anti-CHRNA7 Antibody - Background

Rabbit polyclonal antibody to CHRNA7