

Anti-C/EBP delta/epsilon Antibody
Catalog # AP53659

Specification

Anti-C/EBP delta/epsilon Antibody - Product Information

Application	WB, IF
Primary Accession	P49716
Other Accession	Q15744
Reactivity	Human, Mouse, Rat
Host	Rabbit
Clonality	Polyclonal
Calculated MW	28467

Anti-C/EBP delta/epsilon Antibody - Additional Information

Gene ID 1052

Other Names

CEBPD; CCAAT/enhancer-binding protein delta; C/EBP delta; Nuclear factor NF-IL6-beta; NF-IL6-beta; CEBPE; CCAAT/enhancer-binding protein epsilon; C/EBP epsilon

Target/Specificity

Recognizes endogenous levels of C/EBP delta/epsilon protein.

Dilution

WB~~1/500 - 1/1000
IF~~1/50 - 1/200

Format

Liquid in 0.42% Potassium phosphate, 0.87% Sodium chloride, pH 7.3, 30% glycerol, and 0.09% (W/V) sodium azide.

Storage

Store at -20 °C. Stable for 12 months from date of receipt

Anti-C/EBP delta/epsilon Antibody - Protein Information

Name CEBPD

Function

Transcription activator that recognizes two different DNA motifs: the CCAAT homology common to many promoters and the enhanced core homology common to many enhancers (PubMed: [16397300](http://www.uniprot.org/citations/16397300)). Important transcription factor regulating the expression of genes involved in immune and inflammatory responses (PubMed: [16397300](http://www.uniprot.org/citations/16397300), PubMed: [1741402](http://www.uniprot.org/citations/1741402)). Transcriptional activator that enhances IL6 transcription alone and as heterodimer with CEBPB (PubMed: [1741402](http://www.uniprot.org/citations/1741402))

target="_blank">1741402).

Cellular Location

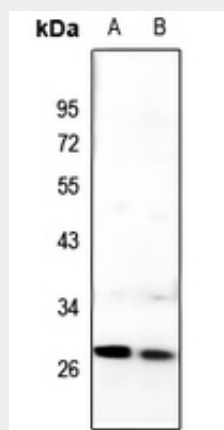
Nucleus.

Anti-C/EBP delta/epsilon Antibody - Protocols

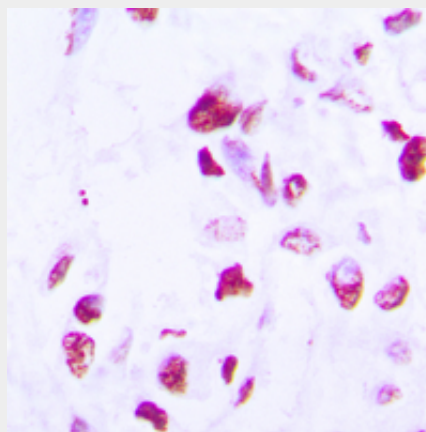
Provided below are standard protocols that you may find useful for product applications.

- [Western Blot](#)
- [Blocking Peptides](#)
- [Dot Blot](#)
- [Immunohistochemistry](#)
- [Immunofluorescence](#)
- [Immunoprecipitation](#)
- [Flow Cytometry](#)
- [Cell Culture](#)

Anti-C/EBP delta/epsilon Antibody - Images

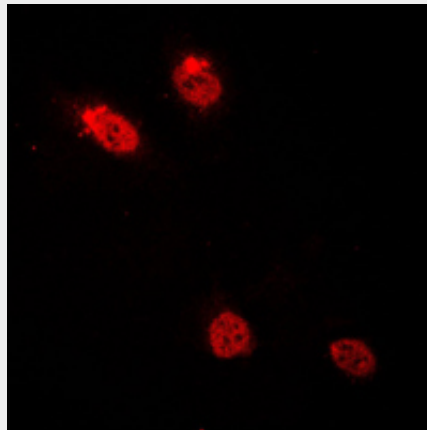


Western blot analysis of C/EBP delta/epsilon expression in CT26 (A), HeLa (B) whole cell lysates.



Immunohistochemical analysis of C/EBP delta/epsilon staining in human lung cancer formalin fixed paraffin embedded tissue section. The section was pre-treated using heat mediated antigen retrieval with sodium citrate buffer (pH 6.0). The section was then incubated with the antibody at room temperature and detected using an HRP conjugated compact polymer system. DAB was

used as the chromogen. The section was then counterstained with haematoxylin and mounted with DPX.



Immunofluorescent analysis of C/EBP delta/epsilon staining in HepG2 cells. Formalin-fixed cells were permeabilized with 0.1% Triton X-100 in TBS for 5-10 minutes and blocked with 3% BSA-PBS for 30 minutes at room temperature. Cells were probed with the primary antibody in 3% BSA-PBS and incubated overnight at 4 °C in a humidified chamber. Cells were washed with PBST and incubated with a DyLight 594-conjugated secondary antibody (red) in PBS at room temperature in the dark.

Anti-C/EBP delta/epsilon Antibody - Background

Rabbit polyclonal antibody to C/EBP delta/epsilon