

**Anti-AMD1 Antibody**  
Catalog # AP53657**Specification**

---

**Anti-AMD1 Antibody - Product Information**

Application	WB
Primary Accession	<a href="#">P17707</a>
Reactivity	Human, Mouse, Rat
Host	Rabbit
Clonality	Polyclonal
Calculated MW	38340

**Anti-AMD1 Antibody - Additional Information****Gene ID** 262**Other Names**

AMD; S-adenosylmethionine decarboxylase proenzyme; AdoMetDC; SAMDC

**Target/Specificity**

Recognizes endogenous levels of AMD1 protein.

**Dilution**

WB~~1/500 - 1/1000

**Format**

Liquid in 0.42% Potassium phosphate, 0.87% Sodium chloride, pH 7.3, 30% glycerol, and 0.09% (W/V) sodium azide.

**Storage**

Store at -20 °C. Stable for 12 months from date of receipt

**Anti-AMD1 Antibody - Protein Information****Name** AMD1**Synonyms** AMD**Function**

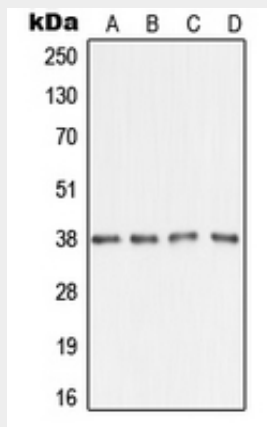
Essential for biosynthesis of the polyamines spermidine and spermine. Promotes maintenance and self-renewal of embryonic stem cells, by maintaining spermine levels.

**Anti-AMD1 Antibody - Protocols**

Provided below are standard protocols that you may find useful for product applications.

- [Western Blot](#)
- [Blocking Peptides](#)
- [Dot Blot](#)
- [Immunohistochemistry](#)
- [Immunofluorescence](#)
- [Immunoprecipitation](#)
- [Flow Cytometry](#)
- [Cell Culture](#)

#### Anti-AMD1 Antibody - Images



Western blot analysis of AMD1 expression in A431 (A), HepG2 (B), SP2/0 (C), H9C2 (D) whole cell lysates.

#### Anti-AMD1 Antibody - Background

Rabbit polyclonal antibody to AMD1