

**Anti-Adenylate Cyclase 5/6 Antibody**  
Catalog # AP53655**Specification****Anti-Adenylate Cyclase 5/6 Antibody - Product Information**

Application	<b>WB, IF</b>
Primary Accession	<a href="#">O95622</a>
Other Accession	<a href="#">O43306</a>
Reactivity	<b>Human, Mouse, Rat</b>
Host	<b>Rabbit</b>
Clonality	<b>Polyclonal</b>
Calculated MW	<b>138908</b>

**Anti-Adenylate Cyclase 5/6 Antibody - Additional Information****Gene ID** 111**Other Names**

ADCY5; Adenylate cyclase type 5; ATP pyrophosphate-lyase 5; Adenylate cyclase type V; Adenylyl cyclase 5; ADCY6; KIAA0422; Adenylate cyclase type 6; ATP pyrophosphate-lyase 6; Adenylate cyclase type VI; Adenylyl cyclase 6; Ca(2+)-inhibitable adenylyl cyclase

**Target/Specificity**

Recognizes endogenous levels of Adenylate Cyclase 5/6 protein.

**Dilution**

WB~~1/500 - 1/1000

IF~~1/50 - 1/200

**Format**

Liquid in 0.42% Potassium phosphate, 0.87% Sodium chloride, pH 7.3, 30% glycerol, and 0.09% (W/V) sodium azide.

**Storage**

Store at -20 °C. Stable for 12 months from date of receipt

**Anti-Adenylate Cyclase 5/6 Antibody - Protein Information****Name** ADCY5**Function**

Catalyzes the formation of the signaling molecule cAMP in response to G-protein signaling (PubMed: [15385642](http://www.uniprot.org/citations/15385642)), PubMed: [24700542](http://www.uniprot.org/citations/24700542), PubMed: [26206488](http://www.uniprot.org/citations/26206488)). Mediates signaling downstream of ADRB1 (PubMed: [24700542](http://www.uniprot.org/citations/24700542)). Regulates the increase of free cytosolic Ca(2+) in response to increased blood glucose levels and contributes

to the regulation of Ca(2+)-dependent insulin secretion (PubMed:<a href="http://www.uniprot.org/citations/24740569" target="\_blank">24740569</a>).

#### Cellular Location

Cell membrane; Multi-pass membrane protein. Cell projection, cilium {ECO:0000250|UniProtKB:P84309}

#### Tissue Location

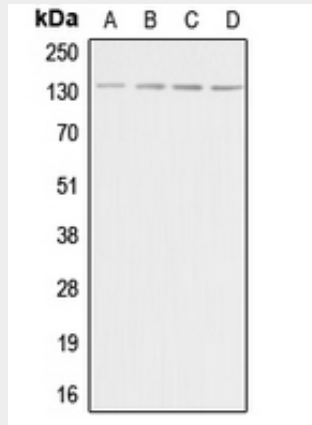
Detected in pancreas islets (at protein level). Expressed in the brain, with high expression in the corpus striatum (PubMed:26085604).

### Anti-Adenylate Cyclase 5/6 Antibody - Protocols

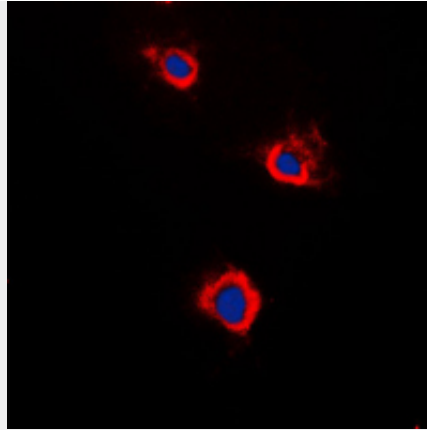
Provided below are standard protocols that you may find useful for product applications.

- [Western Blot](#)
- [Blocking Peptides](#)
- [Dot Blot](#)
- [Immunohistochemistry](#)
- [Immunofluorescence](#)
- [Immunoprecipitation](#)
- [Flow Cytometry](#)
- [Cell Culture](#)

### Anti-Adenylate Cyclase 5/6 Antibody - Images



Western blot analysis of Adenylate Cyclase 5/6 expression in HeLa (A), Raw264.7 (B), PC12 (C), rat brain (D) whole cell lysates.



Immunofluorescent analysis of Adenylate Cyclase 5/6 staining in Raw264.7 cells. Formalin-fixed cells were permeabilized with 0.1% Triton X-100 in TBS for 5-10 minutes and blocked with 3% BSA-PBS for 30 minutes at room temperature. Cells were probed with the primary antibody in 3% BSA-PBS and incubated overnight at 4 °C in a humidified chamber. Cells were washed with PBST and incubated with a DyLight 594-conjugated secondary antibody (red) in PBS at room temperature in the dark. DAPI was used to stain the cell nuclei (blue).

#### **Anti-Adenylate Cyclase 5/6 Antibody - Background**

Rabbit polyclonal antibody to Adenylate Cyclase 5/6