

GPD2 Rabbit pAb
Catalog # AP53561**Specification**

GPD2 Rabbit pAb - Product Information

Application	WB
Primary Accession	P43304
Reactivity	Rat
Host	Rabbit
Clonality	Polyclonal Antibody
Calculated MW	80853

GPD2 Rabbit pAb - Additional Information**Gene ID** 2820**Other Names**

GDH2; GPDM; mGPDH

Dilution

WB~~1:1000

GPD2 Rabbit pAb - Protein Information**Name** GPD2 ([HGNC:4456](#))**Function**

Calcium-responsive mitochondrial glycerol-3-phosphate dehydrogenase which seems to be a key component of the pancreatic beta- cell glucose-sensing device.

Cellular Location

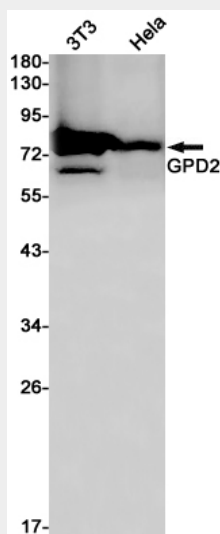
Mitochondrion.

GPD2 Rabbit pAb - Protocols

Provided below are standard protocols that you may find useful for product applications.

- [Western Blot](#)
- [Blocking Peptides](#)
- [Dot Blot](#)
- [Immunohistochemistry](#)
- [Immunofluorescence](#)
- [Immunoprecipitation](#)
- [Flow Cytometry](#)
- [Cell Culture](#)

GPD2 Rabbit pAb - Images



Western blot detection of GPD2 in K562, HeLa cell lysates using GPD2 Rabbit pAb(1:1000 diluted). Predicted band size: 81kDa. Observed band size: 81kDa.

GPD2 Rabbit pAb - Background

Swiss-Prot Acc.P43304. Glycerol-3-phosphate dehydrogenase, mitochondrial